

Kevin Williams
Parking Programme Manager
Kingston & Sutton Shared Environment Service
Tel: 020 8770 5000
Date: 12 October 2023

Dear Resident,

Proposed parking changes for Hackbridge

We're writing to you as part of our ongoing review of parking in Sutton.

The HB1 permit parking area (PPA) was introduced in February 2020. As it has now been in place for an extended period, we are conducting a review on how it has been working.

Have your say

We are asking residents within the current permit zone for their feedback on how the parking scheme is working.

Following initial requests from residents we are proposing to introduce double yellow lines (outside Nos 1-11 and Nos 4-6) Wandle Road and opposite No 14 Park Road to assist with access issues **(see Map on the back of this letter)**.

To assist with partial footway parking we are also proposing to replace the kerb opposite Nos 19-53 Wandle Road to make it easier to park.

You can provide feedback online: sutton.gov.uk/-/parking-review

This informal stage of consultation will end on **26 October 2023**.

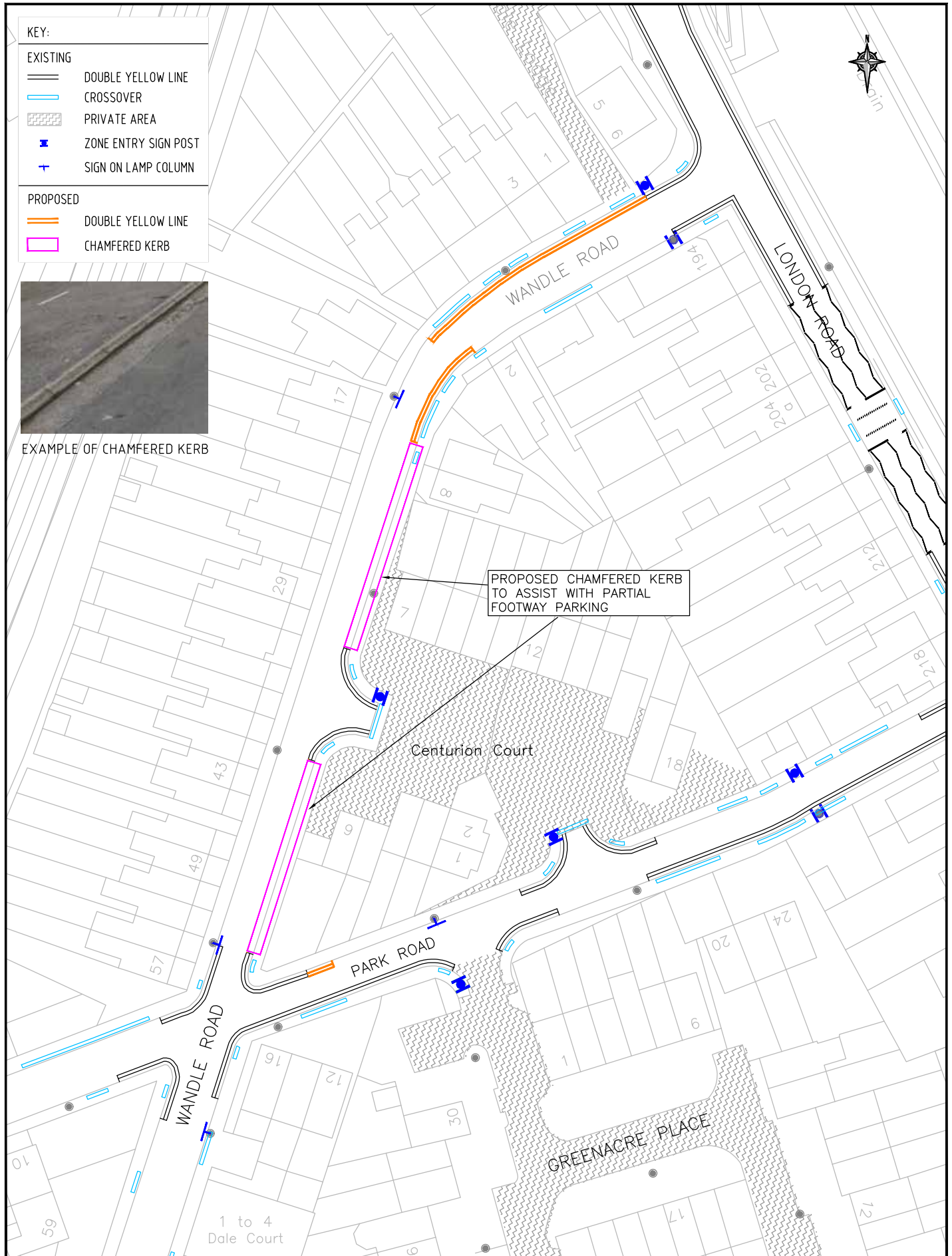
We will review the feedback and speak with ward councillors before a decision is made whether to progress any formal proposals for changes.

If you do not have access to the internet, you can provide your feedback in writing to Parking Strategy Review, Highways & Transport, Civic Office, St Nicholas Way, Sutton, SM1 1EA.

Yours faithfully,

Kevin Williams
Principal Engineer, Kingston & Sutton Shared Environment Services

HB1 permit parking area



BASED UPON THE ORDNANCE SURVEY MAPPING WITH THE PERMISSION OF THE CONTROLLER OF HER MAJESTY'S STATIONERY OFFICE. © CROWN COPYRIGHT. UNAUTHORISED REPRODUCTION INFRINGES CROWN COPYRIGHT AND MAY LEAD TO PROSECUTION OR CIVIL PROCEEDINGS. L.B. SUTTON 100008655X 2023

Proposed: Double yellow lines
Wandle Road & Park Road (HB1 PPA)

