



Kevin Williams  
Parking Programme Manager  
Kingston & Sutton Shared Environment  
Service  
Tel: 020 8770 5000  
Date: 15 February 2024

Dear Resident,

## Proposed parking changes for Dell Close

We're writing to you as part of our ongoing review of parking in Sutton.

Parking remains one of the issues of most concern to residents in Sutton and we have received many requests for a review of parking arrangements across the borough.

### Proposal for Dell Close

Following issues with waste collection vehicles accessing Dell Close we are proposing double yellow lines along the road due to obstructive parking (**see detailed map on the back of this letter**).

### Have your say

This is your first chance to let us know if you agree or disagree with the proposals, have another view or have further feedback about parking. You can provide feedback online: [www.sutton.gov.uk/-/parking-review](http://www.sutton.gov.uk/-/parking-review).

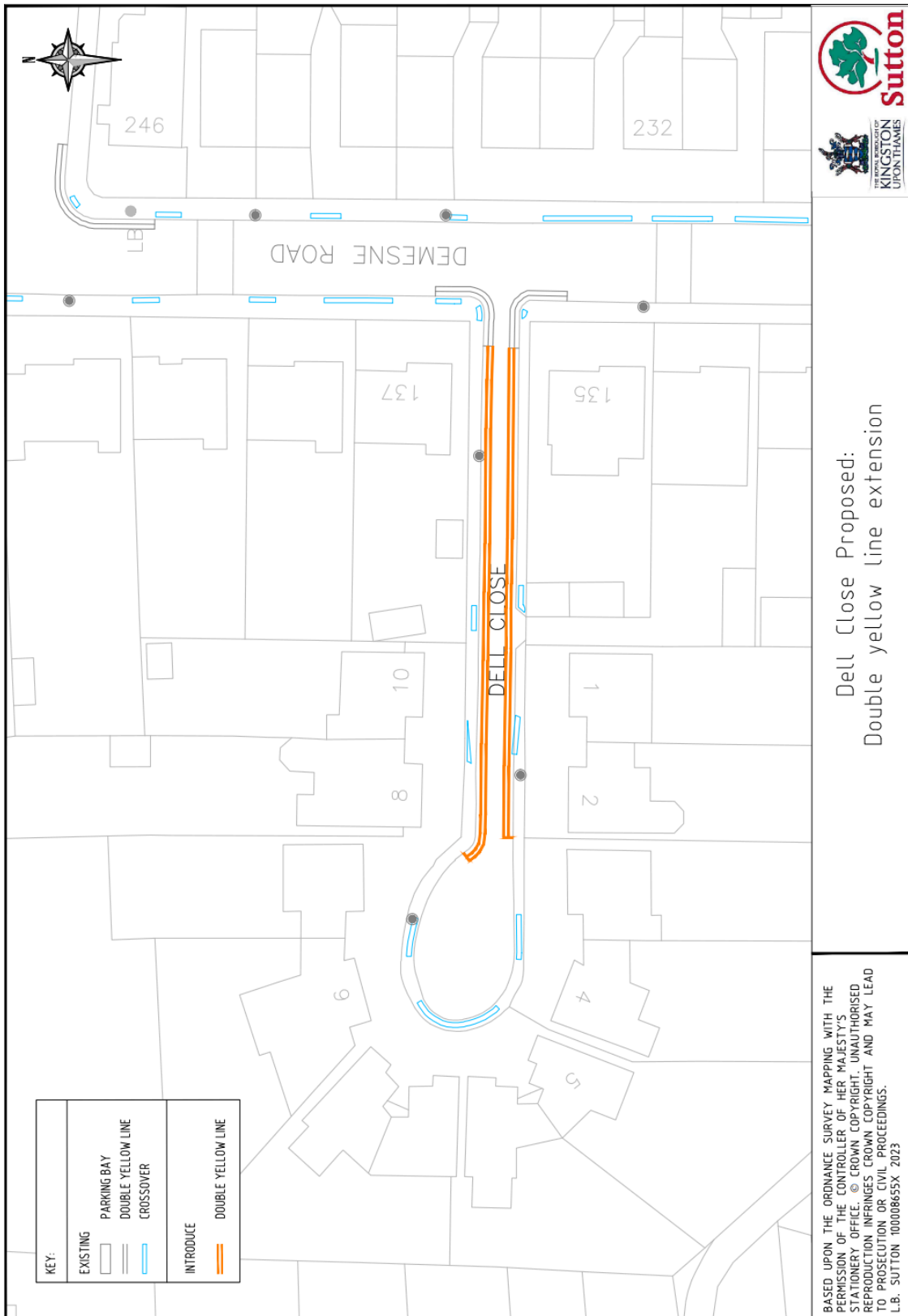
This informal stage of consultation will end on **29 February 2024**. We will review the feedback and speak with ward councillors before a decision is made whether to progress any formal proposals for changes.

If you do not have access to the internet, you can provide your feedback in writing to Parking Strategy Review, Highways & Transport, Civic Office, St Nicholas Way, Sutton, SM1 1EA.

Yours faithfully,

**Kevin Williams**  
Principal Engineer, Kingston & Sutton Shared Environment Services

# Map: Proposals for Dell Close



PS-1000-38-01-14