

SUTTON'S ENVIRONMENT STRATEGY

2019–2025
& CLIMATE EMERGENCY
RESPONSE PLAN



CONTENTS

Foreword - Cllr Manuel Abellan	3
Foreword - Cllr Ben Andrew	5
The Vision	6
Be part of this!	8
Cleaner air	12
A greener borough	16
Achieving net zero carbon	20
Creating a circular economy	24
Tackling climate change	28
Implementation	33
Asks of others	36

FOREWORD 2019



Councillor Manuel Abellan, Chair of Environment and Neighbourhood Committee

I am proud to present Sutton's environment strategy that will take us forward for the next five years. Sutton has a well earned reputation for its green credentials but we want to go further by being London's most sustainable borough. Everyone working, living and studying in Sutton has a part to play in protecting the environment in our borough.

We had a fantastic response to the consultation that we held over the summer of 2018, with over 800 people giving their views via our consultation survey or through activities that Community Action Sutton ran. We've made changes based on your comments.

It's heartening to hear the actions many people in Sutton are already taking to make us the most sustainable borough in London. Using the bus and leaving the car at home, taking reusable bags when shopping, growing your own food and saving water - small actions that, if we all do them, make a big difference.

People rightly reminded us in the consultation that Sutton is just one borough and we need to work with our neighbouring boroughs and others to bring changes that extend beyond London. We will continue to push for action from the UK government as well as governments internationally.

Our efforts have already made a great start with unanimous agreement from councillors to remove single use plastics from council operations and contracts. We'll be ambitious, innovative and involve everyone, helping people to live, work and study more sustainably. Each year we will report how the actions in this strategy are progressing.



FOREWORD 2020



Councillor Ben Andrew, Vice-Chair of Environment and Neighbourhood Committee and Chair of the Climate Emergency Task and Finish Group

Sutton has declared a climate emergency and committed to the borough reducing its carbon emissions to net zero. This is an enormous ambition but the right thing to do for our environment and the health and security of future generations.

The Council cannot do this alone. There is only so much the Council can influence and implement and we need you - citizens, businesses, schools, charities, community groups - to take action to reduce your environmental impact. We also need radical action from national government to change regulations, laws and provide new finance to fund the changes that need to happen.

Through public events and surveys held in February and March 2020, the Council has been able to prioritise what the people of Sutton want to see happen. Thank you for sharing your ideas and concerns, your challenge, priorities and pledges.

Since we declared a climate emergency, the world has been affected by the COVID-19 pandemic. This has impacted some of our plans, and we've seen setbacks in the use of public transport and single use plastics. But we've also seen what a cleaner, greener world can look like; with less traffic and more people cycling and walking, and more people spending time locally. Climate change remains something we must all tackle, but we need to recognise that how we tackle it might be different for a while.

This plan is deliberately written to cover only the next few years. We need to act quickly and take decisions now that will set us well for the future. Technology is changing rapidly; so hopefully will support from national government and business. This means our plans will be refreshed annually as new options become available and regulations change. This also enables us to take into account the impact of COVID-19 and revise our plans accordingly.

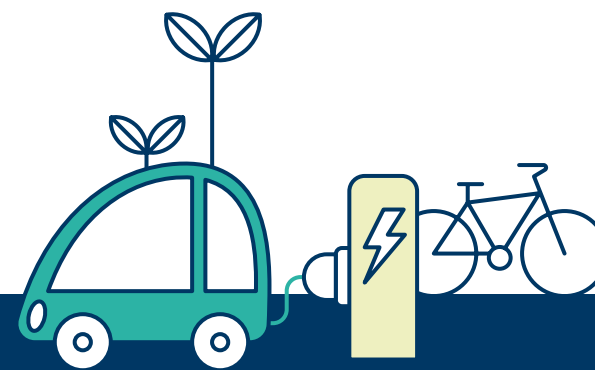
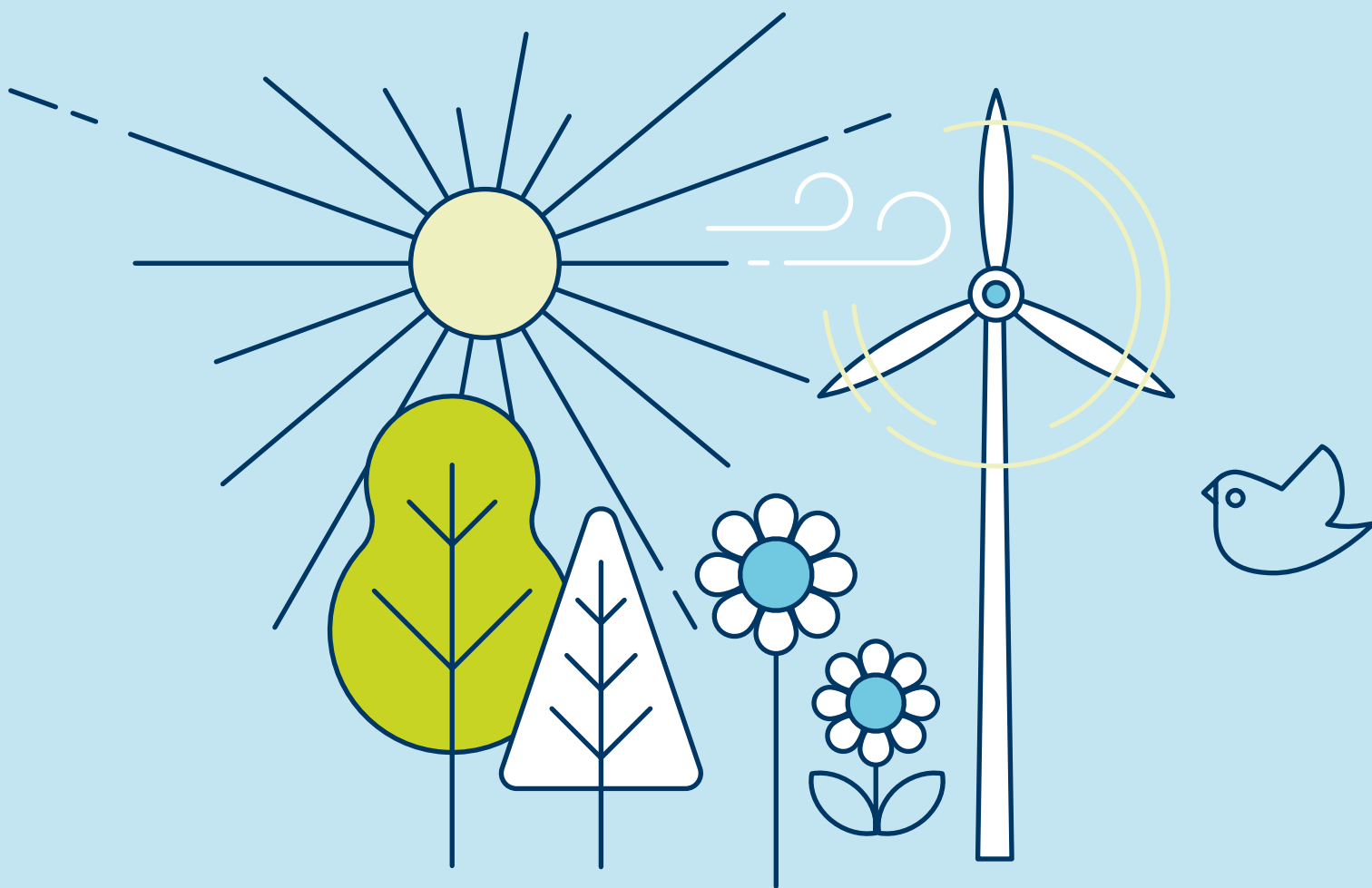
I hope you will be part of the action tackling climate change.

THE VISION

SUTTON WILL BE LONDON'S MOST SUSTAINABLE BOROUGH

Our zero carbon future means cleaner air, and more journeys taken by bike, public transport or on foot. We'll have more green spaces, connected to each other, protecting and enhancing nature and biodiversity. Our energy will be renewable and our homes will be warm in winter, cool in summer, and well insulated.

We will reduce waste and create a circular economy, with options to reuse, repair or re-manufacture the things we buy. We will be able to withstand heat waves, droughts and flooding caused by climate change. Everyone will know and play their role in reducing their impact on the environment.



CLEANER AIR

By March 2022, **48%** of journeys in Sutton will be made by walking, cycling or public transport, rising to **63%** by 2041.

Meet the air quality standards as soon as possible.

ACHIEVING NET ZERO CARBON

All of the borough's energy needs will be met from renewable, community and local sources of energy, helping to deliver boroughwide zero carbon emissions.

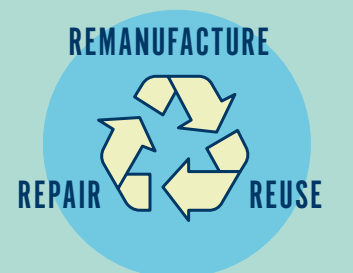
Take action to tackle fuel poverty.



CREATING A CIRCULAR ECONOMY

Reduce waste and increase reuse and recycling from **50%** year on year.

Embed sustainable procurement into the Council's buying and contracts.



A GREENER BOROUGH

No overall reduction in green space in the borough.

Maintain and enhance biodiversity.

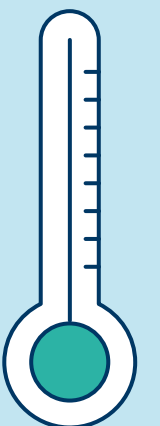
Plant **2,000** trees.



TACKLING CLIMATE CHANGE

Retain Sustainable Food City status each year.

Raise awareness of the climate emergency and the impacts of climate change on Sutton.



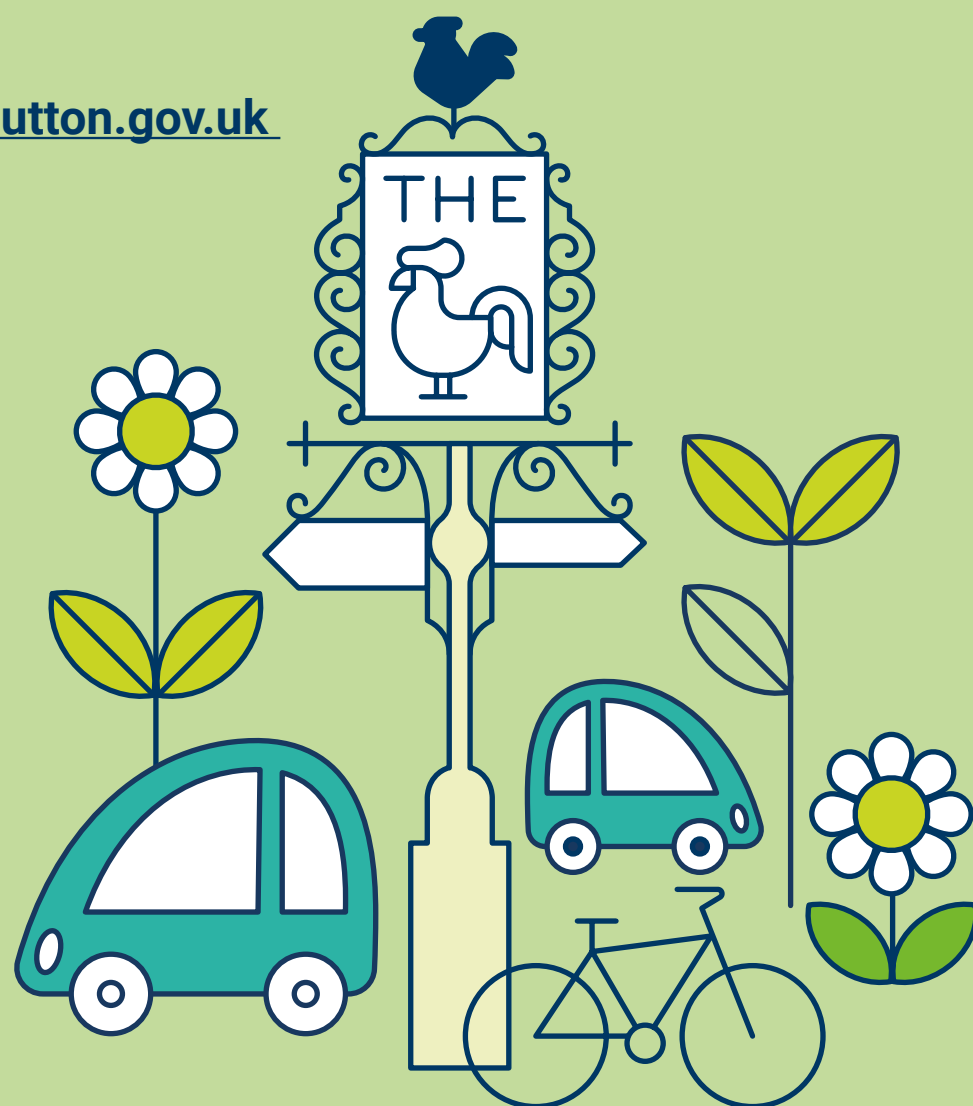
BE PART OF THIS!

We all need to take action to reduce our environmental impact. That's every person, household, school, business, charity, public sector organisation and community groups.

The suggestions on the next page are from the people of Sutton.

More ideas? Want to be part of this?

Let us know at
sustainability@sutton.gov.uk



ENCOURAGE OTHERS TO CAR SHARE
WHERE POSSIBLE WHEN PUBLIC
TRANSPORT IS NOT SUITABLE

SAVE RAIN WATER
IN WATER BUTTS

USE A REFILLABLE
WATER BOTTLE

I'VE GONE DIGITAL TO
REDUCE MY PAPER
USE EG REQUESTING
ELECTRONIC BILLING
NOT PAPER

I OFTEN PICK UP
RUBBISH FROM THE
LOCAL STREETS

TRY WHENEVER
I CAN TO BUY
LOCALLY

USE HARD SOAP,
BUY IN BULK AND
REFILL WHERE
POSSIBLE, USE
BAR SHAMPOO
TO CUT DOWN ON
PLASTIC BOTTLES

MEAT FREE DAYS

USE LESS WATER
FOR SHOWERS

REDUCE THE
AMOUNT
OF PLASTIC
PACKAGING I USE

INVEST
MY MONEY
ETHICALLY

DO ENVIRONMENTAL
WORK AS A VOLUNTEER

VOLUNTEER
TO CLEAN
UP PARKS

COLLECT COLD WATER FROM TAP
IN A BUCKET WHILE WAITING
FOR IT TO RUN HOT. USE THAT
FOR NEXT LAVATORY FLUSH

DONATE CLOTHES
RATHER THAN
BINNING THEM

TRY TO BUY VEG AND FRUIT
LOOSE, NOT IN PLASTIC
BAGS, AND PUT THEM LOOSE
INTO MY SHOPPING BAGS

RECYCLE EVERYTHING WE CAN,
IE CARD, PAPER, PLASTICS,
TINS, CARTONS, GLASS ETC

GOING TO TAKE
OWN CONTAINERS
TO BUY MEAT,
CHEESE AND FISH

OWN AN ALLOTMENT

USE SUSTAINABLE
PUBLIC TRANSPORT
INCLUDING TRAM,
TRAIN AND BUS

BUY BOOKS AND CLOTHES
FROM CHARITY SHOPS

WEAR WARM
CLOTHES AT
HOME TO USE
LESS HEATING

USE OLIO APP, AND VOLUNTEER
AS A FOOD WASTE HERO

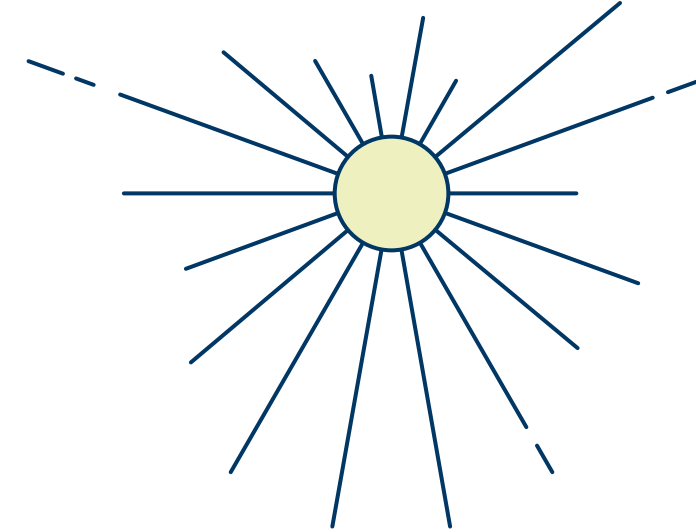
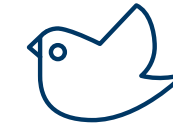
SWAPPED TO
A TOTALLY
SUSTAINABLE
ENERGY PROVIDER

WALK
MORE

USE A BAG FOR LIFE.
AVOID SINGLE USE PLASTICS

Suggestions made by Sutton residents during the 2019 Environment Strategy consultation.

I PLEDGE TO...



BUY FOOD WITH
LESS PACKAGING
ESPECIALLY PLASTIC

BUY REUSABLE ITEMS

BUY SUSTAINABLE
CLOTHES, AVOIDING
'FAST FASHION'

CHANGE MY
ELECTRICITY SUPPLIER

CHANGE THE MINDSETS
OF THOSE AROUND ME

CONTINUE TO RIDE
MY BIKE AND WALK
WHERE POSSIBLE

CREATE MOSS WALLS IN
AREAS OF HIGH TRAFFIC

PLANT FOR WILDLIFE -
ENCOURAGE THE BEES!

CYCLE MORE AND USE
LESS PACKAGING

DRIVE LESS AND
WALK MORE

EAT LESS MEAT

EAT MORE
SUSTAINABLE FOOD

ENCOURAGE OTHERS
TO RECYCLE ITEMS AS
MUCH AS THEY CAN!

FIND OUT MORE ABOUT
RENEWABLE ENERGY AND
CHANGE HOW MUCH I USE

GARDEN TO IMPROVE
BIODIVERSITY

GET RID OF OUR CAR
AND USE ACTIVE
TRAVEL INSTEAD

HELP PLANTS GROW

INFORM RESIDENTS THAT
NEW DRIVEWAYS MUST BE
CREATED WITH POROUS
BRICKS (NOT CONCRETE)

INFORM WORK COLLEAGUES
ABOUT CLIMATE CHANGE

INTRODUCE A LIBRARY
OF THINGS

MOVE FURTHER TOWARDS
A PLANT-BASED DIET

NOT BUY ANY CLOTHES
FOR A YEAR

PLANT A HEDGE OR TREE

PLANT A TREE IN A
SUTTON PARK

WASH PLASTIC
CONTAINERS

PROMOTE SUTTON
COMMUNITY FARM
AND WALK MORE

RECYCLE MORE
AND REMEMBER MY
BAG FOR LIFE

REDUCE MY FOOD WASTE

REDUCE PURCHASES OF
READY MADE MEALS

REGULAR LITTER PICKS

REMEMBER TO SWITCH
THE REMOTE OFF

USE PUBLIC TRANSPORT
WHEN IT'S THE MORE
AFFORDABLE OPTION

WALK, CYCLE OR GET
THE BUS TO WORK

SPREAD THE WORD AT
EVERY OPPORTUNITY

STOP BUYING TAKEAWAYS

STOP USING PLASTIC

SWITCH MY PC AND
MONITOR OFF

SWITCH TO A RENEWABLE
ENERGY SUPPLIER

SWITCH TO HYBRID OR EV
WHEN I CHANGE MY CAR

USE THE GOSUTTON BUS

WATER USE REDUCTION
CAMPAIGN

SAVE WATER

WORK FROM HOME

TIME MY SHOWERS
TO SAVE WATER

TURN THE TAP OFF AFTER
BRUSHING MY TEETH

USE A TIMER ON MY
CENTRAL HEATING

TAKE OUT MY PLUG
SOCKETS AT HOME

USE CLOTH NAPPIES
INSTEAD OF DISPOSABLE

USE MORE PUBLIC
TRANSPORT

USE MY CAR LESS AND
NO FLYING THIS YEAR

VOLUNTEER WITH
CONSERVATION
ORGANISATION

Pledges made by Sutton residents at the "pop-up" events in 2020.

CLEANER AIR

THE VISION

Sutton's air will be clean and safe.



THE CURRENT SITUATION

Improving air quality is a priority and it's one of the top three issues residents want the Council to tackle.¹ Throughout the borough there are two key local air pollutants of concern. These are nitrogen dioxide and particulate matter. The dominant source of both pollutants is road traffic, but other significant sources include industrial and domestic heat and power generation, construction, and domestic biomass burning.

The London Borough of Sutton is compliant with the National Air Quality Standards for all pollutants except nitrogen dioxide. However, there is no safe exposure limit to particulate matter, meaning that to ensure the health of our residents and those who visit the borough, we must go beyond compliance. Carbon dioxide is not considered to be a local air pollutant because, under normal circumstances, it does not exist in sufficient concentrations to be demonstrably harmful to human health.



Nitrogen dioxide and nitric oxide are released into the atmosphere when fuel is burned. Examples include petrol and diesel in a car engine, natural gas in a home central heating boiler, and from power stations. High levels of nitrogen dioxide can inflame the airways in our lungs and over a long period of time affect how our lungs work. People with asthma are particularly affected.

Source: <https://uk-air.defra.gov.uk/assets/documents/reports/aqeg/nd-summary.pdf>

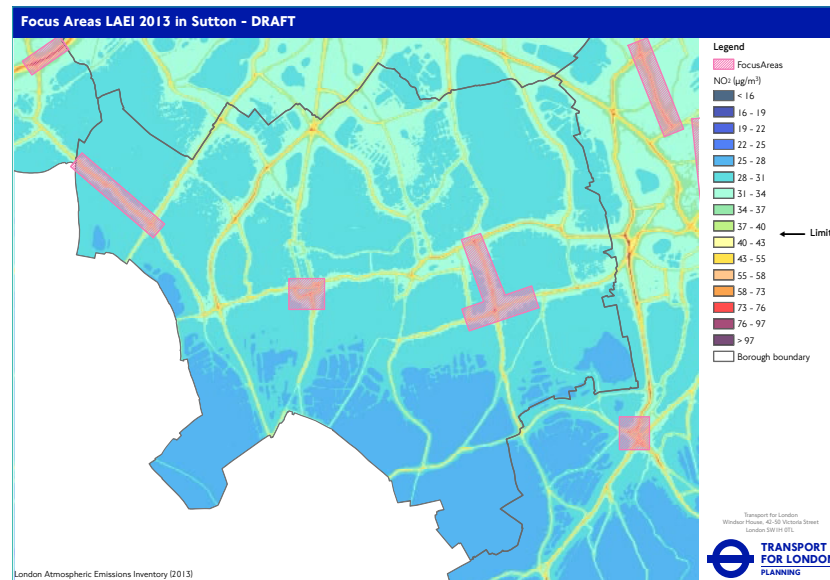
Airborne particulate matter is a collection of solid and liquid materials that range from a nanometer in diameter to around 100 micrometres. It comes from natural and human sources. Sources include the burning of fossil fuels, trace metals, mechanical abrasion e.g. from vehicle braking and tyres and dust from construction sites and quarrying. People most at risk are those with pre-existing lung or heart disease, the elderly and children. The most severe health impacts are from long-term exposure but there is evidence that short-term exposure can cause illness and even death.

Source: <https://uk-air.defra.gov.uk/assets/documents/reports/aqeg/pm-summary.pdf>

1. London Borough of Sutton survey of residents and businesses on sustainability, February-March 2018

The biggest source of air pollution emissions is road transport so this is the Council's main focus. The Greater London Authority has designated three air quality focus areas in Sutton. These are locations with high levels of pollution that people are exposed to.

The three areas are: Central Road, Worcester Park; Woodcote Road, Stanley Park Road & Stafford Road, Wallington; and Chalk Pit Road, Grove Road, Sutton Court Road & Sutton Park Road, Sutton.



◀ *Map of the borough's three air quality focus areas. Shades of blue are least polluted areas; shades of amber, red and brown are the most polluted areas. The red hatched areas are the three focus areas in the borough boundary.*

Reducing the number of motor vehicle journeys will improve air quality, reduce congestion and reduce the barrier a busy road creates between communities. Walking and cycling supports healthier lifestyles.

The Council recognises that lots of people drive in Sutton because the public transport isn't good enough in some parts of the borough,² and the cycle network could be better. The majority of journeys made in Sutton are less than 3 miles in distance³ and so could be done by foot, cycle or public transport.

The Council acknowledges there are concerns about the Energy Recovery Facility at Beddington and its impact on air quality. It is a state-of-the-art facility that has to meet stricter standards for nitrogen dioxide than European Industrial Emissions Directive limits. Compliance will be monitored by the Environment Agency on a continual basis. Managing waste at the Energy Recovery Facility rather than landfilling it will save 128,000 tonnes of carbon emissions each year.⁴

The Council will continue to work with Transport for London to improve the public transport offer in Sutton, and walking and cycling routes. It will continue to lobby for Sutton Link to be funded and developed in the future.

As well as transport, air pollution is caused by boilers and wood-burning stoves, emissions from construction sites and bonfires. The Council uses its planning powers to make sure new developments do not worsen air quality. This includes during demolition, construction and once operational, for example from vehicles and energy use.

THE TARGETS

- ▶ By March 2022, 48% of journeys in Sutton will be made by walking, cycling or public transport, rising to 63% by 2041.⁵
- ▶ By March 2022, 36% of people will be doing 20 minutes of active travel a day, rising to 70% by 2041.⁶
- ▶ By December 2021, 24% of Sutton's population will be within 400m of the strategic cycle network, rising to 37% by 2041.⁷
- ▶ Implement the air quality action plan, meeting the national air quality standards for nitrogen dioxide as soon as possible.
- ▶ Continue to take action to reduce levels of particulate matter.

WHO'S INVOLVED

- ▶ Transport for London
- ▶ The Council - planning, parking, street design, public health, air quality, highways
- ▶ People who live, work and study in Sutton
- ▶ Businesses in Sutton
- ▶ The Sutton Plan partners

STRATEGIES

- ▶ [Air Quality Action Plan](#)
- ▶ [Sustainable Transport Strategy](#)
- ▶ [Cycling Strategy](#)
- ▶ [Ultra Low Emission Vehicle Strategy](#)
- ▶ [Local Plan Policy 34 - Environmental Protection](#)



2. [Local Plan, 2018, page 125](#)

3. [Cycling Strategy, 2017, page 1](#)

4. More information can be found on Sutton Council's website: https://www.sutton.gov.uk/info/200449/waste_and_recycling/1445/beddington_energy_recovery_facility/2

5. The baseline for 2014/15-2016/17 is 46%. In March 2022 we will report on data from 2018/19-2020/21. The March 2022 data will be available and reported on in December 2024.

6. Active travel is defined by TfL as people undertaking at least twenty minutes of walking or cycling a day, either by two blocks of ten minutes or in a single block. The Sutton baseline for 2014/15-2016/17 is 28%.

7. The baseline for 2016 is 0%.

A GREENER BOROUGH

THE VISION

More than half of Sutton's space will be green space.



THE CURRENT SITUATION

The borough has over 1,146 hectares of protected green space, some agricultural land and 34 allotment sites. There are 54 Sites of Importance for Nature Conservation, 11 Local Nature Reserves and 42 hectares of chalk grasslands. These make up about 9% of London's chalk grasslands.⁸ The Wandle Valley Regional Park, which covers the River Wandle and the network of adjoining parks and open land, acts as a green corridor, extending over much of the north and east of the borough. The borough has around 145,500 trees in streets, gardens and private land, but is one of London's least wooded boroughs. Trees cover about 2.4% of Sutton's land area.

The River Wandle runs for 5.9km in the borough and is a designated Site of Metropolitan Importance along its whole length within Sutton. It is one of the only chalk streams in London and one of only around 200 in the world. Through targeted improvement works, it is regaining some of its character and species, after many years of neglect and high pollution levels. In the west of the borough is Beverley Brook, which joins the River Thames at Barnes. The borough has a number of lakes and ponds, and a small amount of reedbed. Good water quality is vitally important for biodiversity. The restoration of Beddington Farmlands will include wet grassland, lakes, reedbeds, meadowland and heathland and create one of the largest nature reserves in London.

Green spaces are important for the borough's natural environment and quality of life. They support wildlife habitats and biodiversity, provide places for leisure and recreation and promote health and wellbeing. 90% of residents use the borough's parks and open spaces.⁹ High biodiversity means a variety of plants and animal species.

The benefits to maintaining high levels of native flora and fauna include human wellbeing, food growing, soil structure, carbon capture, helping keep urban areas cool during heat waves¹⁰ and flood protection. Biodiversity is increasingly being shown to have significant positive impacts on physical and mental health. Native trees are important for biodiversity, and the right trees in the right places can improve air quality.



8. [Sutton Council Biodiversity Strategy](#)

9. [London Borough of Sutton Residents Survey \(2019\)](#)

10. The urban heat island effect occurs when urban areas are much warmer than surrounding rural areas. This is because of the rapid-heating of artificial surfaces and waste heat from buildings, people, vehicles and construction. Nighttime temperatures remain warm because the heat is trapped between buildings.

It can be difficult to recognise the benefits of green spaces, because they typically do not have an obvious financial value. 'Natural capital accounting' is changing this, by estimating a financial value on the benefits green spaces provide, including flood protection, absorbing carbon dioxide, and supporting biodiversity, as well as the benefits to people of having space to play and relax. By using natural capital accounting, the Council aims to recognise the true value of green assets within the borough, so it can weigh this against the cost, for example, of tree maintenance. The Natural Capital Accounts for London indicate that for every £1 spent by councils on green spaces, there are £27 worth of benefits, for example through physical and mental wellbeing.¹¹

Sutton has a good amount of green space but not all green spaces have equal benefits. Well-managed chalk grasslands or wetlands offer far more for biodiversity, carbon sequestration and flood protection than large areas of short mown amenity grass with few species. Sutton has lots of small green spaces and we need to improve the links between them. 'Green corridors' support nature and offer cool continuous corridors for walking and cycling during heat waves. Not everyone in the borough has a local park or green space nearby they can use. 15% of the borough is an area of nature conservation deficiency.¹² We will prioritise these places. This is our contribution to helping London become a National Park City.¹³

Space to create large new parks, nature reserves and green open spaces is limited, so we need new green spaces to be created in the form of living walls or biodiverse roofs, or through creative approaches like improving road verges for biodiversity, pocket parks, community tree planting and food growing spaces. We need to build new homes in Sutton, so Sutton's planning policies seek to achieve this whilst retaining the existing open amount of open space in the borough, protecting areas rich in native biodiversity and increasing the amount of 'green infrastructure' in new developments.¹⁴

The government recently mandated 'Biodiversity Net Gain' for all local planning authorities in England, which means that all new planning applications should provide a 'net gain' in habitats through each development. This consists of identifying and quantifying the existing habitats on site ('biodiversity units'), and then calculating the difference made by the planning application. This determines if the site is providing a net gain for biodiversity.

Sutton is ahead of the national curve, having adopted No Net Loss and Net Gain (where feasible) through the Local Plan and Technical Guidance Note: Building a Sustainable Sutton¹⁵ and adopted London's first Compensation Tariff, of £94,000 per 'generic' biodiversity unit.

The main aim is to deliver biodiversity gains on each development, but if this is not achievable and the developer will deliver a Net Loss, they will pay the Compensation Tariff rate to deliver the actions outlined in the Biodiversity Strategy.

Sutton will seek to further increase the amount of biodiversity delivered through each planning application, by incorporating a 20% net gain uplift (or 2 units per hectare, whichever is greater) to each development, through the updated Local Plan in 2023, as well as mandatory levels for other biodiversity features (such as nesting / roosting boxes and hedgehog holes).

THE TARGETS

- ▶ No overall reduction in the amount of green space in the borough.¹⁶
- ▶ By 2050, at least half of Sutton's land area will still be green space.¹⁷
- ▶ Plant 2,000 trees every year (community, council and developer-led schemes all count).
- ▶ Advise and monitor Viridor's delivery of the Beddington Farmlands landfill site as one of the largest nature reserves in London by 2023.

FOCUS AREAS

- ▶ Maintain and enhance the biodiversity value of the borough.

WHO'S INVOLVED

- ▶ Sutton Housing Partnership
- ▶ Housing associations
- ▶ Sutton Nature Conservation Volunteers
- ▶ South East Rivers Trust
- ▶ Wandle Valley Regional Park Trust
- ▶ Sutton Council - biodiversity, parks, trees, highways, planning and sustainability
- ▶ People who live, work and study in Sutton
- ▶ Businesses
- ▶ The Sutton Plan partners

STRATEGIES

- ▶ Local Plan:
 - [Policy 5 - Wandle Valley Renewal](#)
 - [Policy 13 - Housing and Garden Land](#)
 - [Policy 25 - Open Spaces](#)
 - [Policy 26 - Biodiversity](#)
 - [Policy 33 - Climate Change Adaptation](#)
- ▶ [Parks and Open Spaces Strategy](#)

11. Natural Capital Account for London, November 2017, https://www.london.gov.uk/sites/default/files/nca_supplementary_document.pdf

12. See Table 8.12 in [Authority Monitoring Report 2018-19](#)

13. For more information see the National Park City website: <http://www.nationalparkcity.london/>

14. [Local Plan, Policy 25, page 88, Policy 26, page 90 and Policy 33, page 114](#)

15. [Technical Guidance Note: Building a Sustainable Sutton](#)

16. The baseline for this is the [Authority Monitoring Report 2016-17](#). This sets a baseline of 605.9 hectares of green belt, 529.1 hectares of Metropolitan Open Land (MOL) and 518 hectares of Public Open Space (which includes some land designated as Green Belt or MOL).

17. The Greater London Authority dataset '[London Borough green and blue cover summary statistics](#)' sets a 2019 baseline of 49.69% 'green' and 1.25% 'blue' (lakes, rivers, ponds etc.) totalling 50.94% green and blue.

ACHIEVING NET ZERO CARBON

THE VISION

The borough will have net zero carbon emissions.



THE CURRENT SITUATION

Energy usage followed by vehicle use is the main cause of carbon emissions in Sutton, and therefore the dominant contributor to climate change.¹⁸ How the emissions from road traffic will be reduced is covered in the Cleaner Air chapter, with this chapter focusing on energy use.

Homes and businesses in Sutton are reliant on energy sources that in the main contribute to greenhouse gas emissions. Over time, the national grid is decarbonising as more energy comes from renewable sources, with 29 per cent of the UK's electricity coming from renewable sources in 2017.¹⁹ Sutton has a growing population, and as new homes are built the demand for energy will increase.

We need to generate low carbon and renewable energy locally, so that more demand for energy doesn't have a negative impact on carbon emissions and climate change. We need to determine the right heat and energy mix for the borough, based on local geographical and geothermal opportunities. This means solar panels on buildings, heat pumps which take heat from the ground or air, or using local waste heat sources like the Energy Recovery Facility in Beddington.

Waste heat is considered partially renewable,²⁰ depending on the waste it is burning, and is lower carbon energy than coal or gas power stations. The Sutton Decentralised Energy Network Limited has been created to supply low carbon heating and hot water, using the waste heat from the Energy Recovery Facility. Once established, this network could be extended to supply more businesses and homes in the borough and beyond.

An easy decision every business and household can make is to switch their energy supply to a renewable tariff. Large businesses and organisations should enter into a Power Purchase Agreement to make sure new renewable energy capacity is being created. Generating more renewable energy within the borough also needs to happen.

Uptake of solar power is low in London and Sutton, and to begin to address this, the Council has installed solar panels on suitable buildings it owns. Sutton has been part of three group purchasing schemes, making it cheaper for households to purchase solar panels. Over 1,300 households registered and 276 have progressed with solar panel installation. Community energy schemes²¹ are an option for community groups to deliver and the Council wants to support this.

Better insulation of homes reduces carbon emissions and makes them warmer, healthier and cheaper to heat. Households in fuel poverty are categorised as having low income, poor energy efficiency and energy costs that are above the national average. Were they to spend that amount, they would be left with an income that is below the official poverty line.²² Around 10% of households in Sutton are thought to be in fuel poverty, just below the national average.²³ Retrofitting homes across the borough to reduce carbon emissions provides an opportunity to create warmer homes and tackle fuel poverty. Sutton Housing Partnership already has a home improvement programme, and the Council offers free home visits to fuel poor households or where people have certain medical conditions.

These visits are funded by energy companies who have obligations to help improve the energy efficiency of homes. The Council's Statement of Intent²⁴ extends the criteria of those eligible for a home visit, to ensure more vulnerable people in Sutton can benefit. We will provide information to homeowners and the wider public about ways to make homes warmer and save money on energy bills by improving energy efficiency and reducing the carbon footprint of their home.

THE TARGETS

- ▶ The Council will achieve net zero carbon emissions across its estate and operations.
- ▶ The Council will switch to a renewable electricity supply from April 2021.
- ▶ All of the borough's energy needs will be met from renewable, community and local sources of energy, helping to deliver boroughwide zero carbon emissions.²⁵

FOCUS AREAS

- ▶ Take action to tackle fuel poverty.

WHO'S INVOLVED

- ▶ Sutton Housing Partnership
- ▶ Housing associations
- ▶ Energy companies
- ▶ Voluntary and community sector
- ▶ Sutton Council - energy, regulatory services, planning and sustainability
- ▶ Sutton Decentralised Energy Network
- ▶ Organisations building new homes
- ▶ People who live, work and study in Sutton
- ▶ Businesses
- ▶ The Sutton Plan partners

STRATEGIES

- ▶ Local Plan Policy 31 - Carbon and Energy
- ▶ Fuel Poverty Action Plan
- ▶ Town Centre Masterplan

18. <https://www.un.org/sustainabledevelopment/energy/> and <https://naei.beis.gov.uk/laco2app/>

19. *London Environment Strategy*, page 210

20. Defra, and Office of National Statistics UK Environment Accounts 2019

21. <https://www.communityenergy.london/>

22. GOV.UK, *Fuel Poverty Statistics*

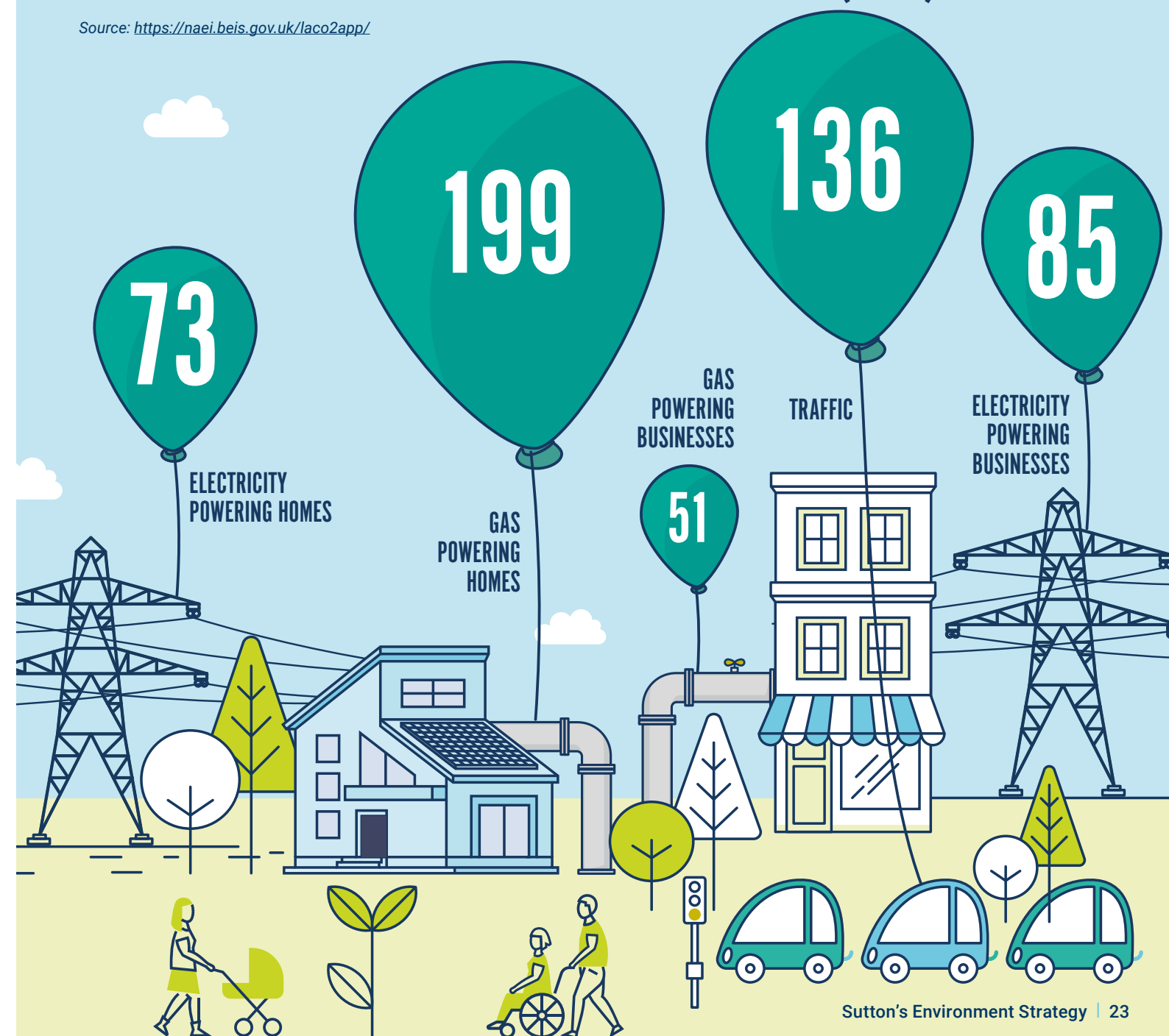
23. *Fuel poverty strategy, 2014*, page 3

24. *Sutton Council Statement of Intent*

25. <https://naei.beis.gov.uk/laco2app/> then search for Sutton

WHERE ARE SUTTON'S CARBON EMISSIONS COMING FROM? IN KILOTONNES PER YEAR (2018)

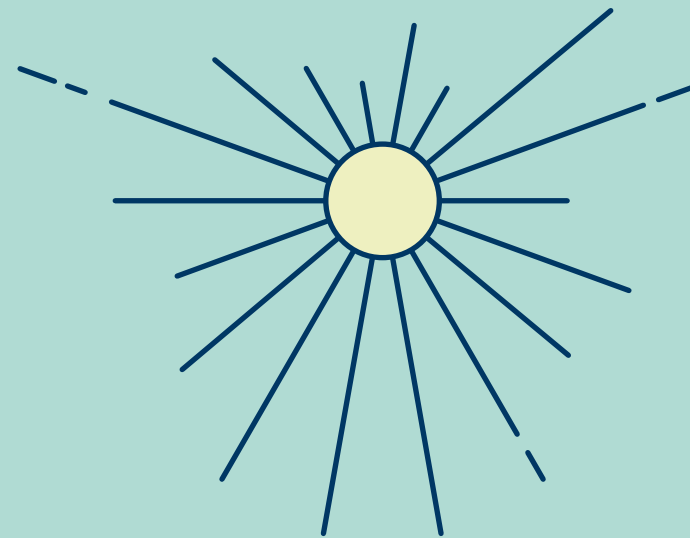
Source: <https://naei.beis.gov.uk/laco2app/>



CREATING A CIRCULAR ECONOMY

THE VISION

Waste will be reduced and a circular economy created.



THE CURRENT SITUATION

A circular economy means everything is reused, repaired, or re-manufactured into a new product or recycled. This is only possible if everyone switches to reusable rather than disposable; if manufacturers make their products repairable; and if recycling markets develop so that materials that currently cannot be recycled, can be. These changes are likely to need government intervention and regulation but customers can also challenge businesses about their packaging and products.

In the shorter-term people and businesses still need to reduce waste, including avoidable food waste, and recycle as much as possible, saving money and the planet.

The government's Resources and Waste Strategy published in 2018 sets out some bold plans on packaging, a deposit return scheme and changes to waste collections by local authorities. These plans are still in development and this strategy may change to reflect them in future.

In 2019/20 the Council spent £326m buying goods and services. The Council can contribute to its environmental objectives through its contracts, purchasing and commissioning of services. The Council has pledged to remove single use plastics from its operations and contracts. Part of this includes calling on supermarkets and other organisations to change to recyclable packaging. Other organisations and citizens can decide whether to purchase or hire

something used infrequently, avoiding purchases with excessive packaging, switching to reusing water bottles and coffee cups, and taking a reusable bag to the shops.

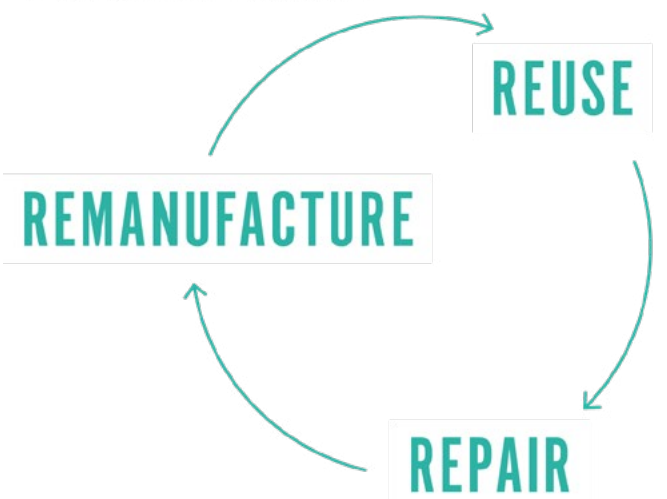
Businesses in the borough can access support to consider how they could adopt circular economy principles through Advance London.²⁶ It is estimated that by 2036, the circular economy could provide London with net benefits of at least £7bn every year in the sectors of built environment, food, textiles, electricals and plastics, as well as 12,000 net new jobs in the areas of reuse, remanufacturing and materials innovation.²⁷ COVID-19 presents an opportunity for a 'green recovery' that will deliver zero carbon commitments.

NOW

A LINEAR ECONOMY

MAKE → USE → DISPOSE

WHERE WE WANT TO BE A CIRCULAR ECONOMY



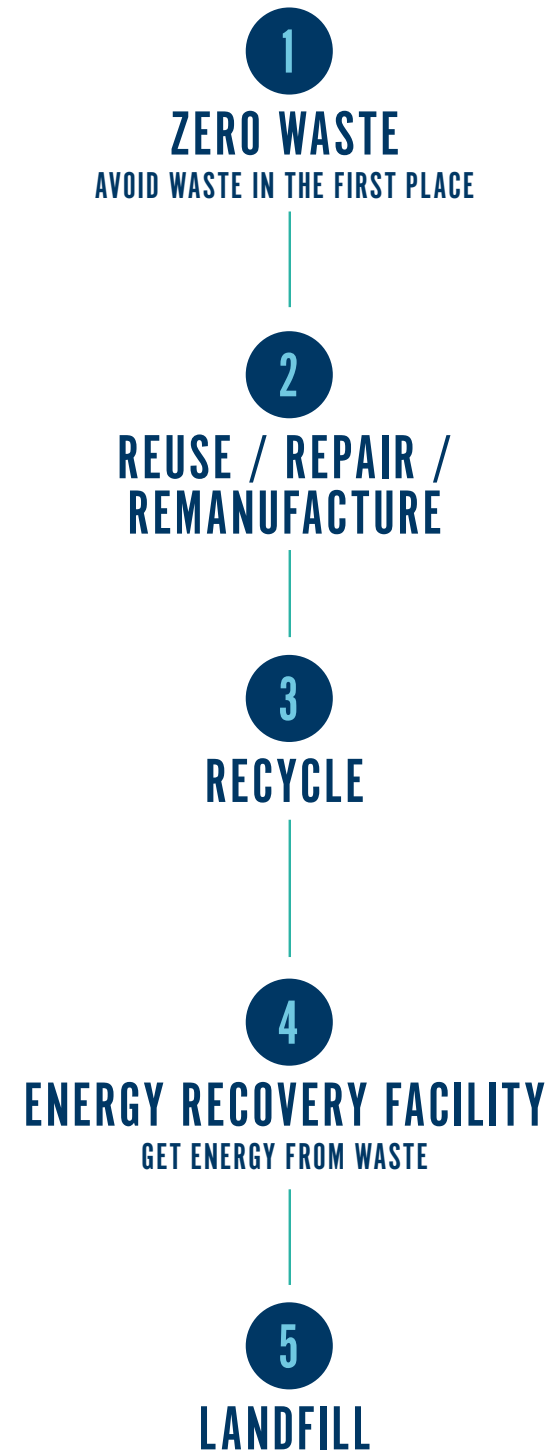
²⁶. [Advance London](#)

²⁷. [London Waste and Recycling Board, Circular Economy Routemap](#)



WASTE HIERARCHY

IN ORDER OF PREFERENCE



THE TARGETS

- ▶ Reduce waste and increase reuse and recycling from 50% year on year and target being the best recyclers in the UK.²⁸
- ▶ Help residents reduce the amount of avoidable food waste they throw away by 20% by 2025.²⁹

FOCUS AREAS

- ▶ Embed sustainable procurement into the Council's buying and contracts.
- ▶ Encourage businesses to switch to circular economy business models.

WHO'S INVOLVED

- ▶ Businesses
- ▶ Business Improvement Districts
- ▶ Advance London programme
- ▶ Sutton Council - economic development and sustainability
- ▶ People who live, work and study in Sutton
- ▶ The Sutton Plan partners

STRATEGIES

- ▶ [Local Plan Policy 25 - Industrial Use](#)
- ▶ [South London Waste Plan](#)
- ▶ [Waste Minimisation Strategy](#)



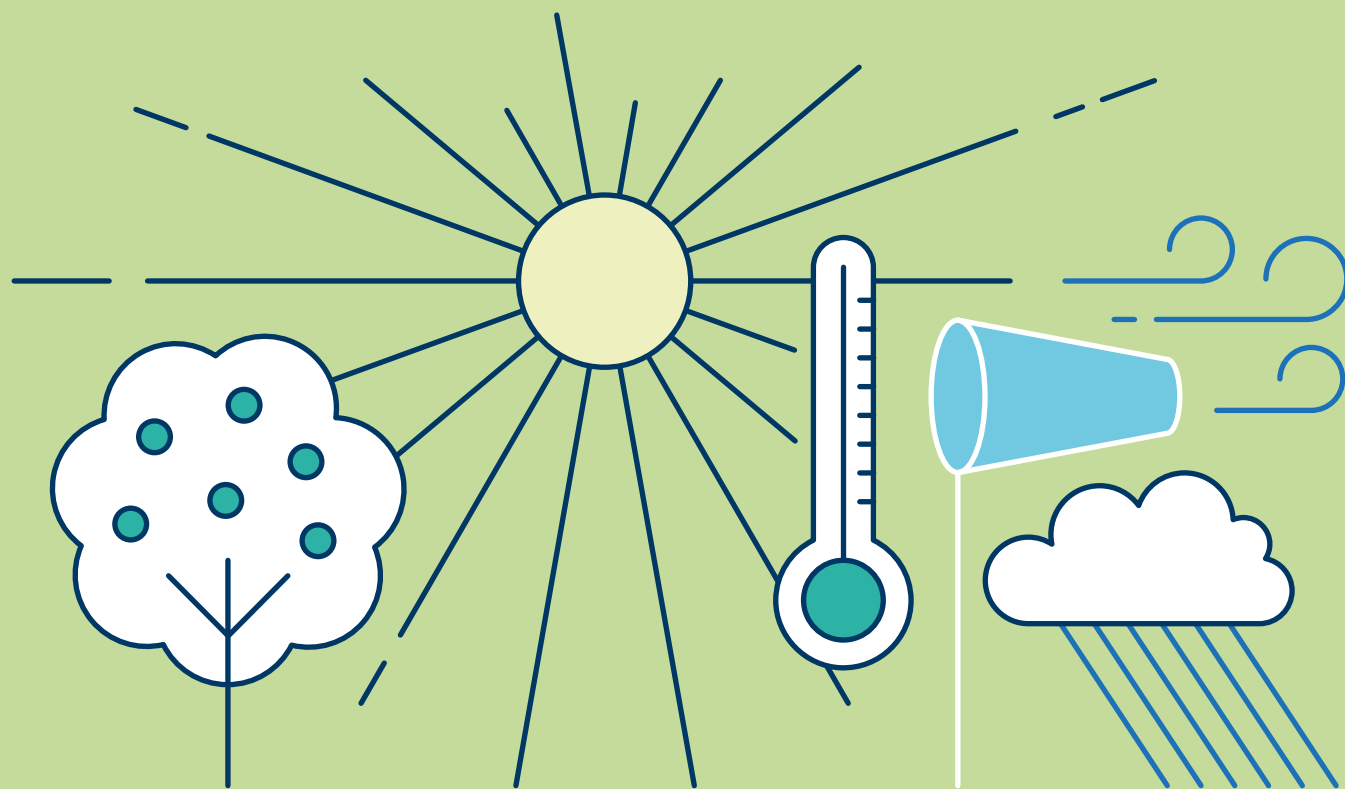
28. The baseline for household residual waste is 434.18kg per household in 2017/18, the food waste baseline is 7,392 tonnes in 2017/18 and Sutton's recycling rate is 50 per cent in 2018.

29. The food waste baseline is 7,392 tonnes in 2017/18.

TACKLING CLIMATE CHANGE

THE VISION

By taking urgent action, we will prevent the worst effects of climate change on people and infrastructure caused by flooding, heatwaves and loss of biodiversity.



THE CURRENT SITUATION

Climate change is already happening and Sutton needs to prepare for changing weather patterns. The International Panel on Climate Change indicates the world must keep global temperature rises below 1.5°C to avoid catastrophic impacts from climate change.³⁰ The borough needs to be prepared for heavy rainfall, extremes of temperature, and drought. The people living in the borough who are most vulnerable to these effects are the priority for building climate resilience.

According to the latest climate projections,³¹ the UK is more likely to get warmer, wetter winters and hotter, drier summers, with more frequent and intense extremes of weather. We need to be prepared for greater variability in our rainfall as widespread flooding could cause major disruption and economic impacts if infrastructure (roads, railways and substations), businesses and schools flood.

Surface water flooding happens when heavy rainfall is unable to soak into the ground or drain into sewers but instead runs over land, causing flooding. 4,827 homes and 220 businesses in the borough are at low to medium risk of surface water flooding; with a further 2,860 homes and 220 businesses at high risk.³² Sutton is ranked the 30th area in England most susceptible to surface water flooding.³³ The priority areas for flood alleviation schemes are Beddington Gardens, Worcester Park, Wallington Station and South Beddington.

With severe storms likely to become more common in future, it is important that through the planning process new developments are designed to minimise all sources of flood risk and the impact on the surrounding area. Sustainable drainage is one way to reduce the impacts of heavy rain.

It works by slowing down the flow of water, storing it and releasing it to the drainage network at a later time, to avoid overwhelming drains and causing flooding. This can be done by storage tanks but also planting and natural features. Sustainable drainage can improve water quality and create greener spaces.

3.7% of the borough, about 2,900 properties, are at medium or high risk of flooding from local rivers.³⁴ The areas most at risk are those along the River Wandle, Pyl Brook and Beverley Brook.

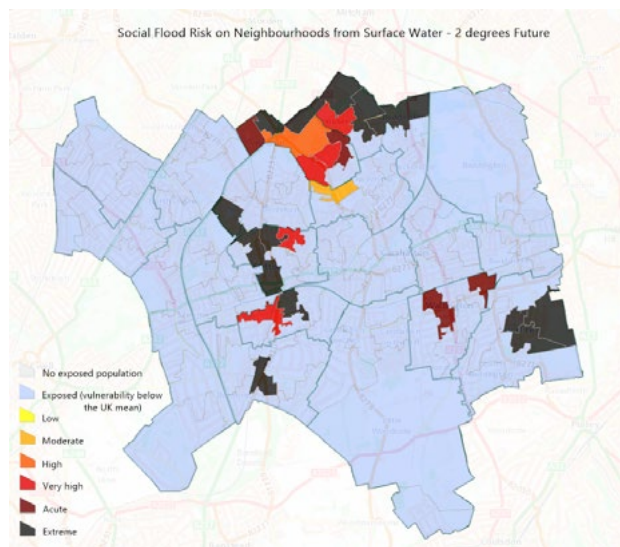


How SuDS 'slow the flow'. Credit: Jane Porter

30. For more information see the International Panel on Climate Change website: https://www.ipcc.ch/news_and_events/pr_181008_P48_spm.shtml

31. The latest UK climate projections (UKCP18) were released in November 2018. <https://www.metoffice.gov.uk/research/approach/collaboration/ukcp/index>

32-34. Local Plan, 2018, page 107



▲ **Map of the community flood risk associated with a global 2 degree temperature increase.** Community flood risk measures where social vulnerability and exposure to flooding coincide in a neighbourhood. Darker colours mean increased risk.

Although severe storms will occur more frequently with climate change, drought conditions are also expected to increase as summers become drier and hotter. London and the South East are already classed as 'seriously water stressed', meaning more water is taken from the natural environment than is sustainable in the long-term.

Increased drought conditions will affect water supply and habitats in the borough by reducing river levels, damaging water supply infrastructure and increasing demand. With less ability to continue to draw water from deep in the ground, we need to aim to reduce the amount of water we use to 110

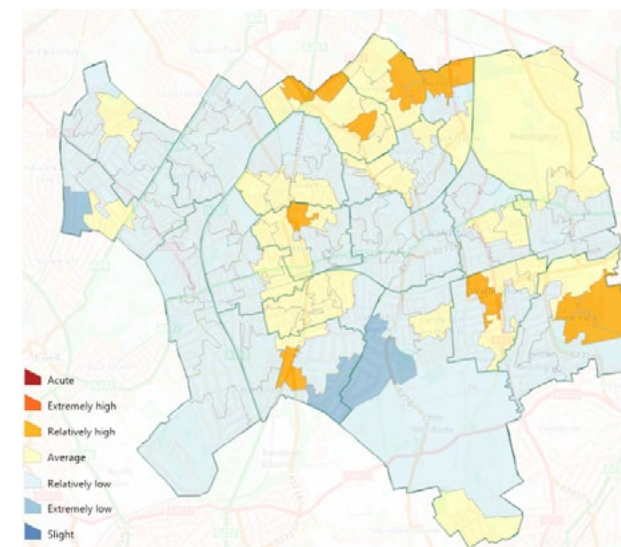
AVERAGE WATER USAGE PER PERSON, PER DAY

- ▶ Sutton currently 160 litres
- ▶ London 156 litres
- ▶ UK 139 litres
- ▶ New development standard in Sutton 110 litres

litres per person per day.³⁵ This will help make Sutton a more sustainable place.

If global temperature rises are not prevented by reducing emissions, hot summers will become more common. The chance of a hot summer has already increased by between 12%-25% due to climate change. By 2050 this could be 50%. By the 2070s, hot spells³⁶ could increase from one every four years to four times a year.

Built up areas are particularly vulnerable to higher summer temperatures and localised heat waves and addressing the impacts of excess heat will become increasingly important.³⁷ Excess heat can particularly be a problem in places where people cannot easily reduce the temperature, for example because they are in hospital or live in a care home. The Council has an emergency planning role to make sure that timely advice is circulated. Planning powers



▲ **Map of heat vulnerability in the borough.** This shows where the negative impacts of hotter summers and hot spells are more likely to occur, based on the level of vulnerability of each neighbourhood.

can ensure buildings are not too hot to be habitable and have adequate ventilation. Trees and green spaces provide important 'cooling' benefits as well.

Whilst cold winters are less likely, extreme cold can be deadly, and tackling fuel poverty will help with this. In the same way as for extreme heat, people are more vulnerable if they are homeless or in a care home or hospital where it is harder to control the temperature. In developing plans around extreme heat, we will also consider extreme cold.

Climate change could mean we need to make roads from different materials or plant drought resident species in parks. Our native biodiversity could be challenged by the introduction of invasive (non-native) species

which are more suited to warmer weather, and falling river levels could have impacts for biodiversity as well as water use. Agriculture makes up 10% of the UK's greenhouse gas emissions.³⁸ There are two main ways people in Sutton can help reduce this. Growing food locally and buying locally grown food helps reduce emissions from agriculture. There will always be some waste, for example vegetable peelings and bones, but using as much as we can of what we buy, and reducing the amount of food that goes mouldy before we eat it, helps reduce emissions. The Council will support action on both.

FOCUS AREA

- ▶ Raise awareness of the climate emergency, the impacts of climate change on Sutton, and the actions individuals can take.
- ▶ Increase the preparedness of Sutton's people, public services and infrastructure for extremes of temperature, drought and flooding.

THE TARGETS

(targets in other chapters of the strategy will also tackle climate change)

- ▶ Retain Sustainable Food City status each year.
- ▶ Work with SES Water to help people reduce their daily water use to 138 litres by 2025.

35. Water usage: Sutton SES Water Annual Report 2017, page 3, aim 5
London and UK Draft London Plan, 2017, new developments Local Plan, 2018, Policy 33, page 114

36. A hot spell is defined as maximum daytime temperatures exceeding 30°C for two or more consecutive days. This triggers a public health warning from the Met Office.

37. This is due to the urban heat island effect which occurs when urban areas are much warmer than surrounding rural areas. This is because of the waste heat from buildings, people, vehicles and construction. Nighttime temperatures remain warm because the heat is trapped between buildings.

38. Department for Business, Skills and Innovation: latest data 2018: https://assets.publishing.service.gov.uk/government/uploads/system/uploads/attachment_data/file/862887/2018_Final_greenhouse_gas_emissions_statistical_release.pdf



WHO'S INVOLVED

- ▶ Sutton Housing Partnership
- ▶ Housing associations
- ▶ Hospitals
- ▶ Care providers
- ▶ Sutton Council - emergency planning, flood risk management, regulatory services, sustainability and planning
- ▶ Environment Agency
- ▶ SES Water
- ▶ Thames Water
- ▶ People who live, work and study in Sutton
- ▶ Businesses
- ▶ The Sutton Plan partners

STRATEGIES

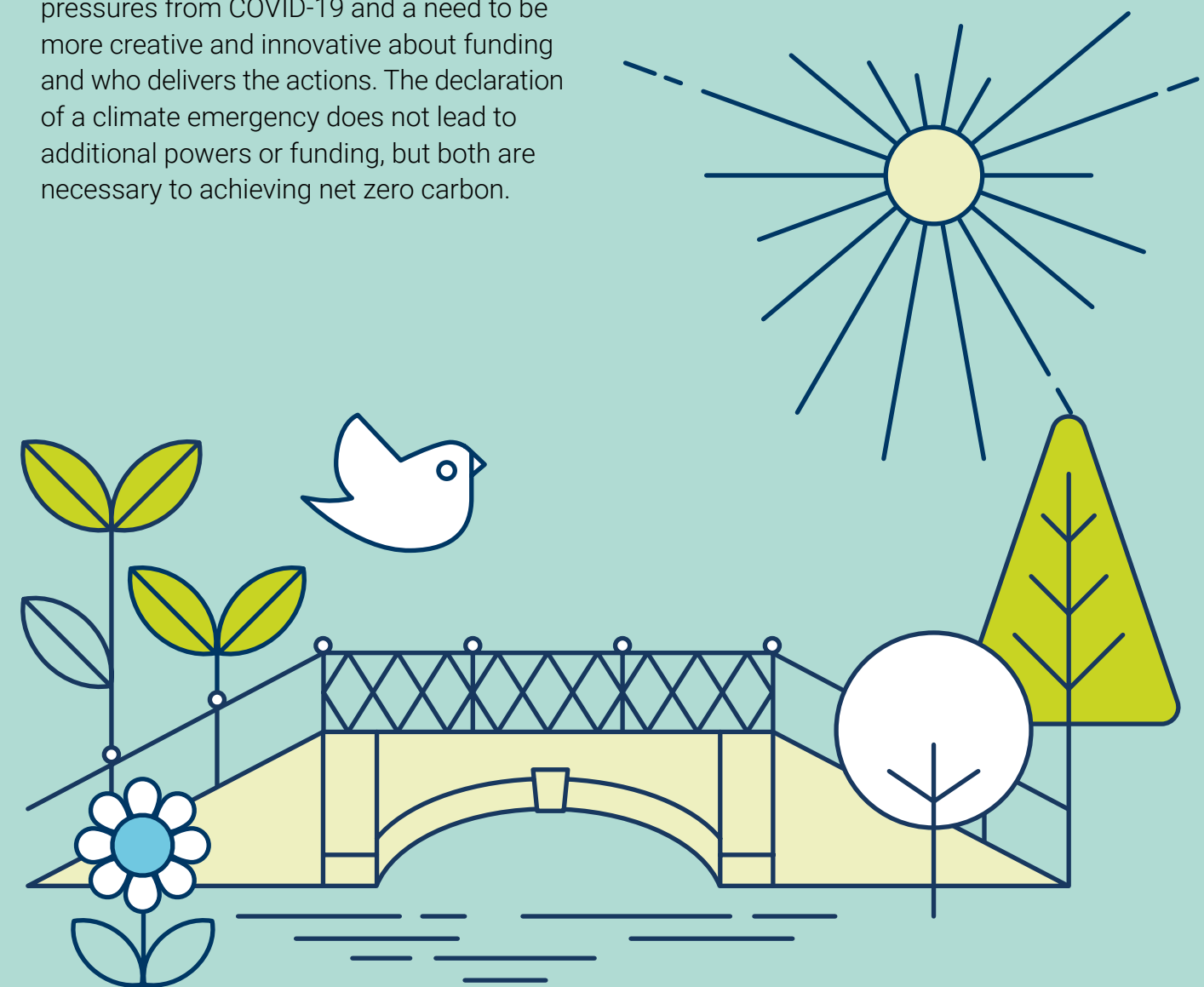
- ▶ [Flood risk management strategies](#)
- ▶ Local Plan:
 - [Policy 13 - Housing and Garden Land](#)
 - [Policy 31 - Carbon and Energy \(includes energy insulation and ventilation\)](#)
 - [Policy 32 - Flood Risk and Sustainable Drainage](#)
 - [Policy 33 - Climate Change Adaptation](#)

IMPLEMENTATION

Achieving net zero carbon is highly ambitious and cannot be achieved by the Council or Sutton residents alone. Global, national, regional and local action must all happen together. Sutton Council remains committed to ensuring that the borough of Sutton continues to lead London in its approach to sustainability and the environment.

Nevertheless, this comes at a time of continued pressure on council budgets, new pressures from COVID-19 and a need to be more creative and innovative about funding and who delivers the actions. The declaration of a climate emergency does not lead to additional powers or funding, but both are necessary to achieving net zero carbon.

The lockdown during the coronavirus pandemic in 2020 provided glimpses of what a greener Sutton could look like. In recovering from coronavirus, the world, the UK and Sutton has an opportunity to pursue a "green recovery". The pandemic has also threatened some of the progress made, especially on public transport usage and single use items. These challenges need to be overcome as we tackle the climate emergency.



CORPORATE PRIORITIES

This Environment Strategy supports the London Borough of Sutton to achieve all four of its corporate priorities: Being Active Citizens, Making Informed Choices, Living Well Independently and Keeping People Safe.

The Council is able to take action across its services and functions, and through its role in shaping and supporting the community in the borough. It will seek to influence change in citizens, businesses, public sector partners, developers and other organisations in the borough.

FUNDING AND RESOURCING

This strategy will be delivered by:

1. Internal resources/staffing
Delivering the strategy will involve a ‘whole council’ approach, with officers across the Council working on the actions. Major changes to the Council’s estate and the construction of new council homes will be used as an opportunity to demonstrate Sutton’s sustainability commitments.

2. Grants/funding applications/ partnerships
The Council will bid for available funding, sometimes in partnership with other organisations. We will work with organisations who have their own targets and funding for sustainability initiatives or are best placed to deliver a project, including the Sutton Plan partners. Technological and digital changes may bring new opportunities that we need to adapt to.



3. Investments that cover their own costs
The Council will explore options to fund sustainability schemes through an ‘invest to save’ model, or to invest in assets in a way that provides income in the future. The carbon offset fund, paid by developers when they are unable to offset some of the carbon emissions of a development on the site, will be used for sustainability projects, particularly those related to energy and fuel poverty.



LONDON-WIDE ACTION

Sutton is represented at London level by elected members on the Transport and Environment Committee of London Councils; and at senior officer level on the London Environment Directors Network.

The Council supports the Joint Statement on Climate Change³⁹ issued by these bodies, and is working with other boroughs on seven pan-London programmes:



#1 Retrofit London:
Retrofit all domestic and non-domestic buildings to an average level of EPC B.
Programme timescale: 2020 – 2030.

#2 Low-carbon development:
Secure low carbon buildings and infrastructure via borough planning.
Programme timescale: 2020 – 2022.

#3 Halve petrol and diesel road journeys: Halve road journeys made by petrol and diesel via combined measures that can restrict polluting journeys and incentivise sustainable and active travel options.
Programme timescale: 2020 – 2030.

#4 Renewable power for London:
Secure 100% renewable energy for London’s public sector now and in the future.
Programme timescale: 2020 – 2030.

#5 Reduce consumption emissions:
Reduce consumption emissions by two thirds, focusing on food, clothing, electronics and aviation.
Programme timescale: 2020 – 2030.

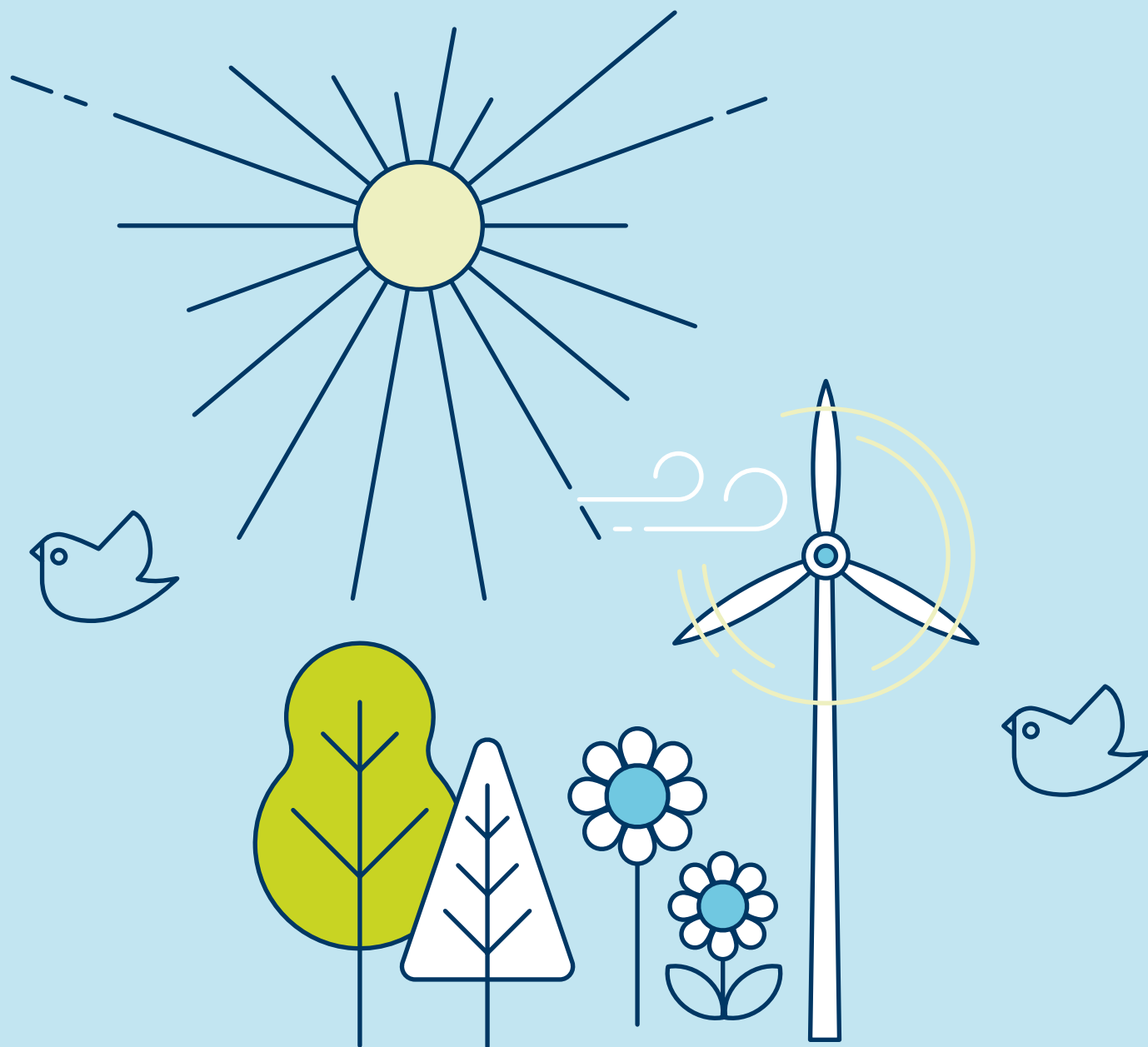
#6 Build the green economy:
Develop London’s low carbon sector and green our broader economy.
Programme timescale: 2020 - 2030.

#7 Creating a resilient and green London

39. The full statement can be read here: <https://www.londoncouncils.gov.uk/our-key-themes/environment/climate-change>

ASKS OF OTHERS

Sutton Council contributes around 3% of the total borough emissions. This means we have asks of others in order to achieve net zero carbon emissions.



WE NEED EVERY BUSINESS, ORGANISATION AND PUBLIC SECTOR AGENCY IN THE BOROUGH TO:

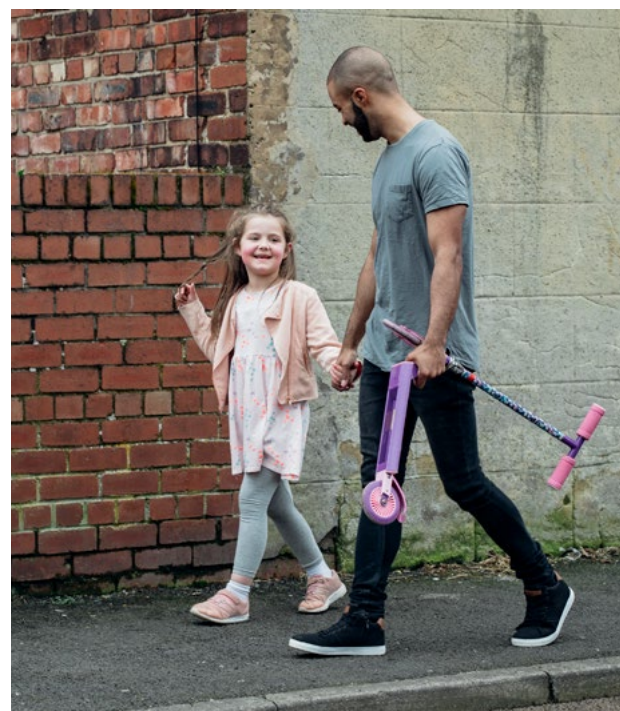
- ▶ Encourage your staff and customers to walk, cycle or use public transport to get to you. Make it easy for them to do this by providing facilities such as cycle parking, showers and season ticket loans.
- ▶ Allow staff to work from home where this is practical for their job.
- ▶ Switch your business fleet to electric vehicles or bikes and install electric vehicle charge points at your premises for customers to use as well.
- ▶ Switch your energy to a renewable tariff and enter into a power purchasing agreement to increase the supply of renewable energy.
- ▶ Get an Energy Performance Certificate (EPC) for your buildings and site and identify ways you can reduce your energy bills by installing insulation, such as through switching your light bulbs to LED and installing energy efficiency measures such as insulation to reduce your energy consumption and bills.
- ▶ Install solar panels on your roof and when replacing boilers or other heating equipment, opt for a heat pump or join a district heating system where this is technically feasible.
- ▶ Recycle everything you can, including food waste.
- ▶ Minimise unnecessary packaging if you supply goods and opt for fully recyclable packaging.
- ▶ Eliminate single use items from your company's operation.
- ▶ When undertaking new building work or maintenance, choose sustainably sourced materials and maximise opportunities for green roofs and solar panels.
- ▶ Manufacturers need to adopt circular principles - choosing materials based on their sustainability and longevity; enabling repairs and the availability of spare parts; and the full recyclability of products at the end of their useful life.
- ▶ Provide information for your staff about how they can reduce the company's environmental impact.
- ▶ Engage your supply chain and work with businesses that take sustainability seriously.
- ▶ Seek sustainability accreditation for the action you are taking and celebrate the changes to inspire others.



WE NEED EVERY SCHOOL IN THE BOROUGH TO:

- ▶ Encourage staff and pupils to walk, cycle or use public transport. Make it easy for them to do this by providing bike parking, showers and season ticket loans for staff. Gain STARS accreditation if you haven't already.
- ▶ Launch a School Streets programme outside your school to improve air quality where this is feasible.
- ▶ Install electric vehicle charging points for staff vehicles and switch any vehicle fleet to electric.
- ▶ Recycle everything you can, including food waste from your canteens.
- ▶ Eliminate single use items from your school's working practices.
- ▶ Install water fountains and encourage reuse.
- ▶ Engage your supply chain and work with businesses that take sustainability seriously.
- ▶ Switch your energy to a renewable tariff and enter into a power purchasing agreement to increase the supply of renewable energy.
- ▶ Switch your light bulbs to LED and sign up to be part of the schools retrofit programme provided by the GLA, to improve the energy efficiency of your buildings.

- ▶ Install solar panels on your roof and when replacing boilers or other heating equipment, opt for a heat pump or join a district heating system where this is technically feasible for your school and premises.
- ▶ When undertaking new building work or maintenance, choose sustainably sourced materials and maximise opportunities for green roofs and solar panels.
- ▶ Teach pupils about the environment, including how to take action on climate change, how to recycle correctly, and how to cycle safely.
- ▶ Use your grounds to engage young people about the environment and curriculum topics - such as gardening, rainfall and sustainable drainage, and mental wellbeing.
- ▶ Provide information for young people, their parents and your staff about how they can reduce the school's environmental impact.



WE NEED EVERY HOUSEHOLD IN THE BOROUGH TO:

- ▶ Switch to a renewable or low carbon energy tariff.
- ▶ Get an Energy Performance Certificate (EPC) for your property and identify ways you can reduce your energy bills by installing energy efficiency measures such as insulation.
- ▶ Opt for energy efficient (A++) appliances such as washing machines and boilers.
- ▶ When doing home renovation work, choose sustainably sourced materials and maximise opportunities for insulation, green roofs and solar panels.
- ▶ When replacing boilers or other heating equipment, opt for a heat pump or join a district heating system where this is technically feasible for your property.
- ▶ Walk, cycle and use public transport as much as you can.
- ▶ Sign up to a car sharing service instead of having a car.
- ▶ Take reusable bags, cutlery and coffee cups when out and about.
- ▶ Ask questions of the businesses you shop with, and find out their environmental credentials.
- ▶ Buy products with recyclable and minimal packaging.
- ▶ Recycle everything you can, including food waste.

- ▶ Be savvy about your food shopping: make use of your leftovers and freezer, and avoid buying what you don't need so it doesn't go to waste.
- ▶ Keep front gardens for wildlife and not completely paved over for cars. Install rain gardens and other sustainable drainage features in your garden.

WE NEED THE HOUSING PROVIDERS IN THE BOROUGH TO:

- ▶ Retrofit your housing stock to zero carbon standards.
- ▶ Build new housing stock that is zero carbon standard, uses sustainable materials, and creates sustainable communities.
- ▶ Share best practice and learning around carbon reduction and environmental improvements.
- ▶ Identify opportunities to embed sustainability across your business, including areas such as biodiversity and green spaces, electric vehicle fleet and sustainable procurement.

WE NEED ENERGY COMPANIES TO:

- ▶ Help people switch easily to the cheapest tariff.
- ▶ Offer smart meters to customers and increase the uptake of them.
- ▶ Promote ways to reduce energy consumption and save money.
- ▶ Invest in new renewable energy supply.

WE NEED SES WATER TO (TARGETS IN THEIR BUSINESS PLAN):

- ▶ Help people reduce their daily water use to 138 litres by 2025 and 118 litres by 2050.
- ▶ Promote ways to reduce water consumption and save money.
- ▶ Help customers use less water by providing home visits and installing water saving devices.
- ▶ Meter 90% of customers by 2025, with a minimum 10% of these customers on smart meters.
- ▶ Reduce leakage on the water network and explain the action residents need to take when they have a leak.
- ▶ Work with the Water Industry to:
- ▶ Prevent the equivalent of 4 billion plastic bottles ending up as waste by 2030.
- ▶ Achieve net zero carbon emissions for the sector by 2030.
- ▶ Improve rivers through delivery of the Environment Agency's Water Industry National Improvement Programme (WINEP).

WE NEED WASTE COMPANIES OPERATING IN THE BOROUGH TO:

- ▶ Offer recycling as standard to every business they service.
- ▶ Incentivise the recycling of food, electrical items, batteries, wood, textiles etc. as appropriate to the business.
- ▶ Work with vehicle manufacturers to encourage investment in electric or other low carbon fuel waste fleets.

WE NEED FINANCIAL INSTITUTIONS AND INSURERS TO:

- ▶ Invest in renewable energy, green technologies and circular business models.
- ▶ Provide green finance options for businesses, public sector organisations and individuals.
- ▶ Offer mortgages, lending options and new financial models of investment to individuals and businesses that support energy efficiency and retrofitting.
- ▶ Support a 'build back better' approach, particularly for flooded properties, to install flood prevention measures that will protect against future flooding.

WE NEED THE LONDON MAYOR AND TRANSPORT FOR LONDON TO:

- ▶ Accelerate plans for the electrification of the bus fleet to 2030.
- ▶ Extend the tram and London Overground network into Sutton.
- ▶ Invest in and improve the Transport for London Road Network (TLRN) for cycling and walking.
- ▶ Extend the bus network so that every home is within 5 minutes walk of a frequent, reliable and accessible bus service.
- ▶ Strengthen the existing Low Emission Zone standard to clean up polluting business vehicles.
- ▶ Continue to fund group purchasing schemes such as for solar panels, and expand these to include energy retrofit / insulation measures for able-to-pay households.

- ▶ Develop the next iteration of the retrofitting programmes for workplaces, schools and homes that provide funding and innovation on energy efficiency at the scale needed for transformation in London.
- ▶ Continue to fund electric vehicle charge point installation in boroughs and take action on the electrification of the 'GLA family' fleet.
- ▶ Continue to fund waste minimisation communications campaigns to reach Londoners and the installation of water fountains.
- ▶ Expand London Power (which provides renewable and affordable energy to homes) to businesses / commercial clients to enable charities, small businesses and organisations such as the Council to switch.



WE NEED NATIONAL GOVERNMENT TO:

Energy efficiency and decarbonisation

- ▶ Fund the retrofitting of the 77,100 properties in the borough (excluding council homes) to a zero carbon standard. We estimate this will cost between £20k and £100k per property, depending on building type and a mature supply chain. This totals between £1.5 bn and £7.71bn.
- ▶ Fund the retrofitting of the 6,600 council housing properties to a zero carbon and fire safe standard by meeting the gap created by accelerating this work beyond planned maintenance and upgrades. We estimate this will cost between £20k-£100k per property, totalling £120m - £600m.
- ▶ Invest in wind, solar and other renewables to decarbonise the National Grid and ensure there is sufficient supply for the demands on electricity.
- ▶ Update national planning policy with stronger requirements on carbon reduction, use of renewables and public transport accessibility. This will help stimulate the markets for low carbon building materials and renewable energy sources.
- ▶ Develop a plan for the decarbonisation of heat, by providing the regulatory and financial framework that supports uptake in solar, community energy and other renewable forms of energy.

- ▶ Bring in tougher minimum energy efficiency standards for buildings (which should increase over time) and provide financial support to homeowners, landlords, housing associations and small businesses to undertake energy efficiency measures.
- ▶ Reaffirm the smart meter rollout programme which is behind schedule.

Transport

- ▶ Accelerate further to 2030 the ban on new petrol and diesel vehicle sales. This needs to be accompanied by a scrappage scheme for diesel and petrol cars and other incentives to give up a car altogether.
- ▶ Offer financial incentives for businesses to switch to a commercial electric vehicle fleet.
- ▶ Increase funding for Transport for London so that increased funding can be passed to boroughs for walking, cycling and sustainable transport, so that funding levels match our ambition.
- ▶ Continue to fund the installation of electric vehicle charging points.
- ▶ Increase fixed penalty notice penalties for anti-idling and increase funding for local authorities to be able to resource this enforcement.
- ▶ Require businesses and schools to have travel plans and to update them regularly.

Waste

- ▶ Require manufacturers and businesses to package products in recycled and commonly recyclable packaging, or require the business to offer a free take-back service.

- ▶ Review the Waste Transfer Regulations and identify where they impede on circular economy businesses and initiatives.
- ▶ Ban single use plastics where alternatives are available e.g. single use water bottles and nappies.
- ▶ Support and fund the development and innovation of waste reprocessing facilities that seek to recycle new materials e.g. plastic film to make these businesses nationally scalable so that local authorities can start to offer them in recycling collections.

Climate change

- ▶ Reduce the requirements on school and nursery catering services to offer meat at least three times a week.
- ▶ Raise public awareness of the reasons why front and back gardens need protecting from being built over, and restrict the sale of artificial turf. Give local authorities new planning enforcement powers on this, with funding to resource enforcement.
- ▶ Require large businesses and organisations including public sector agencies to report annually on their carbon emissions and those of their supply chain.
- ▶ Increase funding for flood risk management schemes and adapt the funding formula to allow increased funding of projects that tackle surface water flooding.



CLEANER AIR

Target: By 2041, 63% of journeys in Sutton will be made by walking, cycling or public transport.

Target: By 2041, 70% of people will be doing 20 minutes of active travel a day.

Action		Timescale	Lead (others involved in italics)	Cost and funding	Project status: draft proposal, final proposal, implementing	Progress Update
SUPPORTING USE OF ACTIVE AND SUSTAINABLE TRAVEL:						
1	Implement the Sustainable Transport Strategy 2020 - 2025, enabling an increase in walking, cycling and sustainable travel across the borough.	See action plan within the LIP3 strategy - progress reporting will be undertaken annually to the Environment & Sustainable Transport committee.	Principal Policy Officer - Strategic Transport <i>Various others from teams across the Council e.g. Highways</i>	Existing Council budgets, including TfL Local Implementation Plan and Cycleway funding. The Ashden / Friends of the Earth toolkit proposes spend of £50/person/year on walking and cycling. This equates to £10.3m. The Council has historically received around £1.5m each year from TfL towards transport projects and other sources (e.g. Section 106). A significant increase in funding from TfL would be needed.	Implementing	The strategy is implemented through the delivery of schemes funded through the Local Implementation Plan (LIP) programme. An annual update is provided to the Environment & Sustainable Transport Committee who approves the proposed programme of works. The latest update report was taken to ES&T in January 2025.

	Action	Timescale	Lead (others involved in italics)	Cost and funding	Project status: draft proposal, final proposal, implementing	Progress Update
2	<p>Lobby for improvements to the frequency, coverage and zero emissions status of bus services in the borough.</p> <p>TfL are now proposing for the red bus fleet to be zero emission by 2030. The Council will continue to lobby for earlier adoption in Sutton as changes caused by the Bus Review are implemented.</p>	Ongoing	Principal Policy Officer - Strategic Transport	<p>Staff time on lobbying can be met from existing budgets.</p> <p>Future new routes and increases will be subject to TfL funding position and priorities.</p>	Implementing	<p>All buses operating in Sutton meet the Euro VI emissions standard or higher.</p> <p>The TfL Bus Action Plan, launched on 11 March 2022, accelerated the date for a London-wide zero emission bus fleet to the year 2030 from the previous 2037 ambition.</p> <p>TfL has introduced the new electric buses on routes 93, 154, 164, 213 and 80, joining the zero-emission buses already operating on Route 413. This means that half of all bus journeys undertaken in the borough are now zero-emission, with more than 90 zero emission buses operating in the borough.</p> <p>The changes announced as part of the Sutton Bus Review were delivered in early 2024 as planned. Further replacements of the remaining diesel fleet will continue as route contracts come up for renewal.</p>
3	Lobby for improvements in facilities to support walking and cycling on the TfL Road Network.	Ongoing	Team Leader - Sustainable Transport and Commissioning (Highways)	Regular funding bids are made on an annual basis to deliver improvements for walking and cycling.	Implementing	<p>The council continues to lobby for cycling and walking improvements and works closely with TfL to ensure TfL proposals and the borough's strategic cycleways have connectivity and integration, including in the recent proposal to introduce a new bus lane on St Helier Avenue.</p> <p>On the council's own highways, strategic projects are delivered and reported on through the LIP (Local Implementation Plan). The latest update was provided at the Environment and Sustainable Transport Committee in January 2025.</p>

	Action	Timescale	Lead (others involved in italics)	Cost and funding	Project status: draft proposal, final proposal, implementing	Progress Update
4	Lobby for improvements to rail services in the borough including metroisation, meaning a more frequent service.	Ongoing	Principal Policy Officer - Strategic Transport	TfL's strategic business case for metroisation in South London estimated that the whole scheme will cost £1.6bn. Network Rail and TfL are also looking to progress elements separately.	Implementing	Wider metroisation proposals remain council policy but will be subject to national and London-wide funding, including the creation of national body Great British Railways. Lobbying for further improvements from TfL and Network Rail continues as the opportunity permits.
5	NEW: Deliver the Belmont Station Levelling Up Fund project to increase train frequency at Belmont Station and improve active transport connections from there to the London Cancer Hub.	2024 - 2026	Head of London Cancer Hub Capital Programme	£14.1m secured through the government's Levelling Up Fund.	Implementing	Following the securing of £14.1m of funding from the Government's Levelling Up Fund, plans have progressed to double the train frequency on the Belmont/London Victoria line. The necessary infrastructure upgrades are due to be completed in 2027. Two rounds of consultations on designs to improve surrounding public realm and active transport connections to The London Cancer Hub have been completed and work is due to commence January 2025.
6	Implement a programme of School Streets and Play Streets, working with residents and schools.	Ongoing. Launched autumn 2021/22.	Team Leader - Sustainable Transport and Commissioning (Highways)	TfL funding and capital funding is used to deliver the School Streets programme.	Implementing	There are now 13 Schools Streets in operation across the borough. Phase 3 of School Streets is in development and three new school streets were proposed in an update report to the Environment and Sustainable Transport Committee in January 2025, for Rushy Meadow Primary, Avenue Primary and Greenshaw High School.
7	Undertake 'Neighbourhood Place Shaping' consultation with residents regarding the 'Safer and Healthier Streets' programme, developing and co-designing potential schemes as appropriate.	Ongoing	Team Leader - Sustainable Transport and Commissioning (Highways)	Council capital funding / TfL funding.	Draft proposal	Design work continues for the Butter Hill and Worcester Park Neighbourhood Place Shaping. Progress was delayed by the TfL cyber attack. Engagement is anticipated to take place in early 2025.

	Action	Timescale	Lead (others involved in <i>italics</i>)	Cost and funding	Project status: draft proposal, final proposal, implementing	Progress Update
8	Continue to offer support to businesses and schools in travel planning.	Ongoing with progress reported annually.	Sustainable Transport Officer	Met from existing resources.	Implementing - schools	School engagement continues. As of September 2024 twenty schools have achieved STARS accreditation (14 Gold, 3 Silver 3 Bronze). Transport for London's 'Travel for Life' will be providing more proactive support in 2024/25, aiming for a further 10 schools to be accredited by the end of the school year. The overall target for travel plan accreditation is 30 schools.

SUPPORTING THE REDUCTION OF VEHICLE MOVEMENTS:

9	Deliver and monitor the Parking Strategy to identify any displacement activities and reduction in traffic.	Ongoing	Principal Engineer - Sustainable Transport and	Met from existing budgets.	Implementing	<p>There are now 13 Permit Parking Areas (PPAs) and 4 Controlled Parking Zones (CPZs) across the borough. It is anticipated that the levels of commuter parking should be reduced by these PPAs and CPZs, lowering traffic flows in those areas.</p> <p>The review process assesses the impact of displacement of parking and a review of the impact of these parking restrictions is nearly complete. As part of the review requests for PPA extensions and a new PPA have been received as a result of the positive impact.</p>
10	UPDATED: Implement the pilot Delivering Green parcel consolidation scheme in agreed wards, to mitigate air quality impacts associated with parcel deliveries in face of the rise of e-commerce and changes in work patterns post-Covid, and explore expansion of the project to cover additional areas.	2024/25	Climate Partnership Manager <i>Highways</i>	Last-mile parcel consolidation scheme generates revenue for the council for siting delivery lockers on council-owned land.	Implementing	4 locations implemented for the trial project, with additional 13 locations, including libraries and leisure centres, being considered to receive lockers in 2025.

	Action	Timescale	Lead (others involved in italics)	Cost and funding	Project status: draft proposal, final proposal, implementing	Progress Update
11	NEW: Complete and mobilise the new Therapia Lane waste depot ready for the commencement of the new Waste and Street Cleansing contract, supporting reduced waste vehicle movements within the borough.	Completion by March 2025	Waste Strategy Manager	£8.6m from Council capital funding programme.	Implementing	<p>The redevelopment is underway and on target to become operational at the commencement of the new waste and street cleansing contract in April 2025.</p> <p>The depot not only helps reduce vehicle movements, but the redevelopment will meet a BREEAM very good certification, incorporating solar panels and EV charging for current and future EV vehicles. It also supports our circular economy aims by redeveloping an existing site.</p>
IMPROVING COUNCIL STAFF TRAVEL:						
12	<p>Produce a new travel plan for council Staff travel to and at work, including HR policies, travel allowances, the use of personal vehicles, pool and electric bikes, car clubs and public transport. Encourage partners to do the same.</p> <p>As part of this work, investigate the feasibility of a salary sacrifice scheme to support staff take up of electric vehicles (or other renewable fuels).</p>	2024/25	<p>Strategic Reward and Insight Lead</p> <p><i>Various others from teams across the Council e.g. Highways, FM, Parking</i></p>	New policy production can be met from existing budgets.	Implementing	<p>A salary sacrifice scheme to support staff wishing to transition to EV will launch early 2025. Wider work to support staff to travel sustainably has also been undertaken and a new policy promoting sustainable travel by staff where practicable is now in place.</p> <p>A procurement exercise has been undertaken, led by the Sustainable Transport and Commissioning team, to establish an EV car club which will support staff travel.</p>

Action	Timescale	Lead (others involved in italics)	Cost and funding	Project status: draft proposal, final proposal, implementing	Progress Update	
Target: By 2041, 37% of Sutton’s population will be within 400m of the strategic cycle network.						
IMPROVING CYCLING INFRASTRUCTURE:						
13	Secure funding for cycle network improvements e.g. new quiet routes, segregated cycle paths, cycle parking etc.	Ongoing	Senior Sustainable Transport Officer	TfL funds cycleways. The Council is supporting school cycle parking. The Council can use Section 106 (S106) and Community Infrastructure Levy (CIL) funding secured through planning for new initiatives.	Implementing	Further funding was received for six more cycle hangers in 2024/25. Following consultation two locations were not taken forwards. New sites being explored with Sutton Housing Partnership at locations where residents require secure cycle parking so they can commute to their jobs. Locations are still to be confirmed.
14	Encourage e-bike use by working with e-bike providers and bike shops to promote offers on e-bikes. Undertake promotion to residents and encourage workplaces to introduce electric cargo bikes as part of services / goods delivery.	Ongoing	Senior Sustainable Transport Officer	Dockless e-bike hire scheme launched 2022 and met from existing budgets. Electric cargo bikes cost over £4,500 and require external funding.	Implementing - promotion of e-bike hire only.	<p>OurBike e-cargo bike scheme launched in June 2024 at the CryerArts Centre & in September 2024 at Sutton FC. OurBike is based on a ‘back-to-base’ model which means the bike must always be returned to the location it was collected from. To integrate the bike into the local community the scheme uses a ‘host’ model whereby a local business will be the OurBike cargo bike ‘host’ and manage the batteries. The OurBike host receives a number of benefits including free use of the bike for their business and branding on the cargo box.</p> <p>The Forest e-bike hire contract was extended for a further 12 months in September 2024. To the end of August 2024, 133,640 journeys have been taken by Forest users in Sutton with an estimated saving of 28.37 tonnes CO2. In August 2024 >20,000 trips were taken on Forest bikes, compared to just over 4,000 in August 2023.</p>

Action		Timescale	Lead (others involved in italics)	Cost and funding	Project status: draft proposal, final proposal, implementing	Progress Update
CYCLE SKILLS AND TRAINING:						
15	Provide cycle maintenance and cycle safety training and workshops.	Ongoing	Sustainable Transport Officer	Funded through the Local Implementation Plan allocation from Transport for London with associated targets. TfL funding for the remainder of 2023/24 covers service requirements.	Implementing	<p>Sutton delivery 2023/24:</p> <ul style="list-style-type: none"> ▶ Total Level 1/2 and Level 2 booked places for children: 1,194 ▶ Total Level 1, Level 2, Level 1&2, Level 3 Bikeability places booked for children: 1,218 ▶ Total Bikeability plus places booked for children: 297 ▶ Total Bikeability places booked for adults: 177 <p>Latest figures for April - July 2024:</p> <ul style="list-style-type: none"> ▶ Total Level 1, Level 2, Level 1&2, Level 3 Bikeability places booked for children: 628 ▶ Total Bikeability places booked for adults: 77

Target: Implement the Air Quality Action Plan, meeting the national air quality standards for nitrogen dioxide as soon as possible. Continue to take action to reduce levels of particulate matter.

The actions for this target are monitored via the Air Quality Action Plan 2024 - 2029 and the annual progress reports published on the Council’s website.

A GREENER BOROUGH

Target: No overall reduction in the amount of green space in the borough.

Target: By 2050, at least half of Sutton’s land area will still be green space.

Action	Timescale	Lead (others involved in italics)	Cost and funding	Project status: draft proposal, final proposal, implementing	Progress Update
GREEN SPACE PROVISION:					
1 Maximise opportunities for exceeding Local Plan targets for increasing overall green space coverage and improving green space factor (GSF) and urban green factor (UGF) scores by incorporating green infrastructure, new biodiversity habitats, green roofs, trees and nature-based Sustainable Drainage System (SuDS) measures as part of: ▶ new residential and commercial developments; ▶ new council housing and other council-led schemes e.g. schools; ▶ estate renewal schemes; ▶ area-based regeneration schemes such as for Sutton Town Centre and Rosehill; ▶ transport and highway schemes delivered through Sutton’s Local Implementation Plan (LIP); and ▶ flood alleviation schemes delivered through the Local Flood Risk Management Action Plan. Report through the Authority Monitoring Report (AMR)	Publication of Draft Local Plan for public consultation (Regulation 19 stage) by Summer 2025	Senior Planner Senior Biodiversity Officer <i>Housing Regeneration Team Sustainable Transport & Commissioning (Sutton) Team</i> <i>Lead Local Flood Authority (LLFA) officer</i>	Greening and SuDS measures are normally included as part of the cost of the development / scheme. In some situations, public realm funding could be used for schemes that residents want to implement.	Implementing	The Local Plan Issues & Preferred Options document was published for public consultation summer 2024 (Regulation 18). The emerging Local Plan seeks to go further than the current Local Plan 2018 in terms of promoting urban greening as part of new developments and at a more strategic level. Key policies include: ▶ Draft Policy 4 on ‘Flood Risk Management and Making Space for Water’: work with partners to deliver “SuDS retrofit, natural flood management and other urban greening measures as part of estate regeneration schemes, wider urban renewal programmes, highway improvements and healthy streets initiatives...” ▶ Draft Policy 5 on ‘Urban Greening and Climate Change Adaptation’: the Council will “deliver a greener borough over the Plan period which is fully adapted and resilient to climate impacts, including heatwaves, flooding and drought.” ▶ Draft Policy 35 on ‘Blue and Green Infrastructure’: “In seeking to build climate resilient communities, counteract the urban heat island effect and achieve multiple benefits for urban cooling, Biodiversity Net Gain, SuDS, healthy streets, air quality and local amenity, all development proposals must incorporate urban greening measures as an integral part of the design and layout.

Action	Timescale	Lead (others involved in italics)	Cost and funding	Project status: draft proposal, final proposal, implementing	Progress Update
1					Policy stance on Green Roofs is strengthened and a preferred option is set out applying the Council's GSF score to all new-build developments, not just major developments as is currently the case.
2	Prepare a green infrastructure (GI) strategy for the Borough as part of the Local Plan review in order to deliver multiple benefits for cooling, SuDS, biodiversity net gain, local amenity and healthy streets which: ► is based on an understanding of existing GI assets and linkages from a range of sources including the Local Plan evidence base; Green Space Information for Greater London (GiGL); and remote mapping and satellite imagery generated by automated mapping tools; ► identifies opportunities for creating new or enhancing existing GI assets and linkages in order to ensure that the Borough is integrated into London's wider green space network and for mitigating climate impacts through strategic GI interventions, including as part of area-based regeneration schemes; estate renewal; habitat creation schemes; Pocket Parks and SuDS retrofit. Report through the Authority Monitoring Report (AMR)	Publication of Draft Local Plan for public consultation (Regulation 19 stage) by Summer 2025	Head of Strategic Planning Senior Planner Senior Biodiversity Officer	Greening and SuDS measures are normally included as part of the cost of the development / scheme. In some situations, public realm funding could be used for schemes that residents want to implement.	Draft Proposal <

Action	Timescale	Lead (others involved in italics)	Cost and funding	Project status: draft proposal, final proposal, implementing	Progress Update
<p>3</p> <p>Ensure that the revised planning policies being prepared as part of the review of Sutton's Local Plan continue to:</p> <ul style="list-style-type: none"> ▶ protect the Sutton Green Belt and metropolitan open land (MOL) against loss to inappropriate development ▶ maintain or enhance the provision of public open space throughout the Borough (hectares per 1,000 population)? ▶ require all developments in areas of open space deficiency to provide new open space and/or contribute towards the provision of new open spaces or improvements to the accessibility and quality of existing public open space. 	<p>Publication of Draft Local Plan for public consultation (Regulation 19 stage) by Summer 2025</p>	<p>Head of Strategic Planning</p> <p>Senior Planner</p>	<p>Costs are contained within the Strategic Planning budget for preparing the Local Plan.</p>	<p>Currently preparing the Local Plan Issues and Preferred Options document for public consultation in Spring 2024 (Regulation 18 stage)</p>	<p>The Local Plan Issues & Preferred Options document published for public consultation between 25 July and 26 September 2024 continues to provide strong policy protection for the Sutton Green Belt and MOL against loss to inappropriate development. The relevant policy is Policy 32 on 'Green Belt and MOL'. However, as with all other policies covered by the emerging Local Plan, this policy will need to be reviewed further in the light of the Government's proposed changes to the national planning policy framework (July 2024).</p>
<p>4</p> <p>MERGED: Support communities' creation of pocket parks, community gardens, biodiverse habitats, food growing and 'meanwhile' use of spaces.</p> <p>Prioritise areas with green space deficit, as identified through Local Plan data and climate risk maps.</p>	<p>Ongoing</p>	<p>Head of Parks and Open Spaces</p> <p><i>Sustainability Manager</i></p> <p><i>Project and Volunteer Coordinator</i></p>	<p>External funding is needed to support delivery of this action. Community groups can apply for public realm funding through Local Committees, or grants such as the Greener City Fund (GLA). Ongoing costs for maintenance need to be considered at the point of application together with who is responsible for ongoing maintenance.</p>	<p>Implementing</p>	<p>The GreenSpace project was delivered in Limes Avenue Recreation Ground at the start of 2024, with the location chosen through consultation and analysis of climate risk maps.</p> <p>The project provided a range of improvements to the existing green space that brought biodiversity, amenity and climate adaptation benefits, including tree planting, bulbs, wildflowers, habitat boxes and information boards.</p> <p>The Lenham Road community garden project (delivered by local residents) has been expanded and continues to improve the appearance and biodiversity value of the formerly grassy areas around the Times Square multi-story car park, supported by the Biodiversity Team.</p>

Action		Timescale	Lead (others involved in italics)	Cost and funding	Project status: draft proposal, final proposal, implementing	Progress Update
MANAGEMENT OF PARKS AND OPEN SPACES:						
5	Implement the Parks and Open Spaces Strategy. This is a major programme of business-as-usual activities, re-engineering processes and methods of parks maintenance, and projects.	2020 - 2025	Head of Parks and Open Spaces Various other teams and organisations supporting implementation	5-year programme of works, some of which is fully funded, some is partly funded and some will depend on successfully bidding for external funding.	Implementing	The Parks and Open Spaces Strategy (P&OSS) continues to be implemented through both business as usual and project work with numerous projects now completed and underway. A review of the P&OSS has begun in preparation for updating the strategy during 2025 and seeking committee approval for a new strategy covering 2026-2031.
6	Implement the Parks and Open Spaces Strategy. This is a major programme of business-as-usual activities, re-engineering processes and methods of parks maintenance, and projects.	2020 - 2025	Head of Parks and Open Spaces Various including the Tree Officers and Biodiversity Officers.	This work is funded from existing budgets.	Implementing	The Council has seventeen individual Parks Management Plans covering more than thirty four sites. As a percentage of the 87 parks this is 33.75%. As a percentage of the overall hectarage this is 53.17% of 462.67 Ha. The Council has 12 Green Flag Awards covering more than 20 parks and open spaces.
TREE PLANTING:						
7	Plant 2,000 trees each year.	Annual	<i>Senior Arboriculturalist</i>	Tree planting is dependent on the allocation of funding from Local Committees, other council budgets and external funding bids as the parks team does not have a budget allocation for purchasing trees.	Implementing	In total 2,682 trees were planted in 2023/24. For 2024/25 a programme of tree planting is planned through a range of funding including Neighbourhood Community Infrastructure Levy (NCIL), Forestry Commission, Local Authority Treescape Fund (LATF) and The Tree Council.
8	Support community groups who want to plant trees - help with bidding, give advice and organise planting events.	Annually - reporting on the number of trees planted.	Senior Arboriculturalist	Providing support is met from existing budgets.	Implementing	In total 4,537 trees were planted in 2022/23. Funding was provided by Natural England, the Treescapes Fund, Public Realm funding, sponsorship, donations, friends groups, the Elms 4 London initiative as well as planning contributions and council capital funding.

Action	Timescale	Lead (others involved in italics)	Cost and funding	Project status: draft proposal, final proposal, implementing	Progress Update
--------	-----------	-----------------------------------------	------------------	-----------------------------------------------------------------------	-----------------

Target: Advise and monitor Valencia’s delivery of the Beddington Farmlands landfill site as one of the largest nature reserves in London by 2023.

TREES, PARKS AND BIODIVERSITY:

9	Monitor and advise on the creation of new wildlife habitat through the restoration of Beddington Farmlands.	Ongoing	<div>Senior Biodiversity Officer</div> <div>Reserve Warden</div> <div>Planning Enforcement</div> <div>Development Management</div>	Viridor funds the Reserve Warden position as part of its planning obligation for the Energy Recovery Facility.	Implementing	<div>Little to no progress has been made with seeking an abstraction permit from the Environment Agency to provide water control function for the wet grasslands.</div> <div>At time of reporting (winter 2024) very little habitat management had been achieved. Some spraying had been undertaken to control undesirable species and the ‘acid grassland’ area had been cut. The meadowlands still needed cutting and collecting and the wet grasslands required vegetation control before the wet weather set in.</div> <div>2024 was, arguably, the worst recorded year for breeding lapwing on site, almost certainly due to a combination of poor spring and early summer weather, the lack of suitable and timely management of the wet grasslands by Valencia Waste Management and the lack of commensurate management by Thames Water of the Displacement Habitats.</div>
---	-------------------------------------------------------------------------------------------------------------	---------	------------------------------------------------------------------------------------------------------------------------------------	----------------------------------------------------------------------------------------------------------------	--------------	------------------------------------------------------------------------------------------------------------------------------------------------------------------------------------------------------------------------------------------------------------------------------------------------------------------------------------------------------------------------------------------------------------------------------------------------------------------------------------------------------------------------------------------------------------------------------------------------------------------------------------------------------------------------------------------------------------------------------------------------------------------------------------------------------------------------------------------------------------------------------------

Focus: Maintain and enhance the biodiversity value of the borough.

Action		Timescale	Lead (others involved in italics)	Cost and funding	Project status: draft proposal, final proposal, implementing	Progress Update
10	Deliver the Biodiversity Strategy.	2020 -2025	Senior Biodiversity Officer Biodiversity Education Officer Biodiversity Field Officer Reserve Warden of Beddington Farmlands	Some projects can access agri-environment funding but others (e.g. river restoration) require funding applications. Funding may be available through the Biodiversity Net Gain planning policy.	Implementing	<p>The Biodiversity Team has continued to provide significant outreach engaging people in nature / ecology & climate issues (as set out at 11).</p> <p>Previous habitat creation schemes (Butterfly Banks, Habitat Banking areas) continue to be managed, sites are monitored and adaptive management takes place.</p> <p>New habitat creation areas, scheduled for autumn 2024, were postponed to 2025 due to the impact of the autumn wet weather.</p> <p>The new Sustainable Farming Incentive (SFI) expanded offer is being explored and will be applied for, increasing the amount of council land holdings under an agri-environment scheme from the previous Higher Level Stewardship (HLS) agreement, generating some income for management.</p>
11	Provide biodiversity education to 5,000 people each year (3,500 school-aged children).	Ongoing	Biodiversity Education Officer	These events are self-financing.	Implementing	<p>Biodiversity education engagement data is reported by financial year. The most recent data, for 2023/24, shows the Biodiversity Team engaged 9,664 people.</p> <p>Of this, 4,035 school-aged children and 2,236 adults were engaged via school trips and activities at Sutton Ecology Centre. A further 3,393 people were engaged through 54 events, including via guided walks (birds, bats, Beddington Farmlands and butterflies), talks, presentations and online webinar presentations and in person panel discussions on Biodiversity Net Gain.</p>

Action		Timescale	Lead (others involved in italics)	Cost and funding	Project status: draft proposal, final proposal, implementing	Progress Update
12	UPDATED: Promote and enable environmental volunteering opportunities.	2020 -2025	Senior Biodiversity Officer	<p>Met from existing budgets.</p> <p>There are various organisations in Sutton that offer environmental volunteering as well as council-led opportunities.</p>	Implementing	<p>Volunteer activity data for Parks and Biodiversity is reported by financial year. The most recent data, for 2023/24, shows Task Day volunteers with the Biodiversity Team donated 631 days, valued at £49,785.90. This involved 130.25 task events working on 43 sites / site parcels.</p> <p>Education Volunteers donated a further 98.5 days, valued at £7,771.65.</p> <p>The Biodiversity Assistant donated 21 days, at a value of £1,656.90.</p> <p>Sutton Nature Conservation Volunteers undertook 4.1 days worth of unsupervised tasks, valued at £323.49.</p> <p>In total, volunteers with the Biodiversity Team donated 754.60 days, at a total value of £59,537.54.</p> <p>Volunteers with the Parks and Open Spaces team donated 11,206 hours in 2023/24 which equates to 1,868 days, at a total value of £147,359. This includes volunteering figures for; 18 Friends groups, the Sutton Tree Wardens and a variety of groups such as schools, scouts, corporate groups and faith and community groups. The volunteering is supported by the Project & Volunteer Coordinator and Parks team.</p>

Action		Timescale	Lead (others involved in italics)	Cost and funding	Project status: draft proposal, final proposal, implementing	Progress Update
PLANNING:						
13	UPDATED: Implement and monitor mandatory Biodiversity Net Gain (BNG) requirements.	2025/2026	Senior Biodiversity Officer Officers from Strategic Planning and Development Management	Met from existing budgets.	Implementing	<p>A project team has been established to drive the implementation of BNG. A proposed fee charging structure is part of the Council's Medium-Term Financial Plan in Spring 2025. Through the Local Plan Review, a public consultation has been undertaken as part of the Preferred Issues and Options Paper (regulation 18) to look at the uplift options when implementing BNG during the planning process.</p> <p>The identification of the 'responsible body' for managing section 106 agreements also needs to be determined - the Council is undertaking discussions with the GLA and London Councils.</p>
14	UPDATED: Contribute to the GLA's development of the pan-London Local Nature Recovery Strategy and prepare for implementation once complete.	Ongoing - annual progress reporting.	Senior Biodiversity Officer <i>Officers from Strategic Planning and Development Management</i> <i>Officers from the GLA</i>	Met from existing budgets.		The GLA has undertaken two rounds of consultation on the Local Nature Recovery Strategy and the council has fed into this process. The council will contribute to further rounds of consultation.

ACHIEVING NET ZERO CARBON

Target: The Council will achieve net zero carbon emissions across its own estate and operations.

	Action	Timescale	Lead (others involved in italics)	Cost and funding	Project status: draft proposal, final proposal, implementing	Progress Update
PATHWAY TO NET ZERO:						
1	COMPLETE: Develop a pathway for net zero carbon emissions across the Council's estate and operations.	March 2023	Head of Climate Action and Emergency Planning	£40,000 (combined with the borough-wide pathway)	Implementing	A net zero road map report was reported to the Environment and Sustainable Transport Committee at its meeting on 10 October 2024. The report sets out a high-level road map to decarbonise the council estate and whole borough. Over 750 actions have been analysed and prioritised in terms of carbon and cost effectiveness.
2	NEW: Publish the council's progress in reducing carbon emissions through the annual Greenhouse Gas Emission Report.	Annually	Data and Systems Manager	Funding met from existing budgets.	Implementing	The annual report for 2023/24 has been published and is available on the council website. The data indicates that total net GHG emissions from Council operations in 2023/24 was 7,444 tonnes CO2e, which is 57% lower than the 2008/09 baseline.
THE COUNCIL'S ESTATE:						
3	As appropriate opportunities come forward, replace council buildings with zero carbon or BREEAM 'Outstanding' buildings, and identify retrofit measures for the remainder.	As appropriate.	Head of Programme and Project Management, Assets	Costs not known at present. A business case would need to be developed.	Implementing - where funding permits.	<p>Housing Phase 2C projects at Beddington Lane and Woodcote Road are Passive House certified. The Woodcote Rd project is complete & final Passive House certification is awaited. The Beddington Lane project has now commenced on site.</p> <p>The Therapia Lane Depot refurbishment is being designed to achieve BREEAM Very Good certification & is currently on site. Work is also taking place to ensure that the St Nicholas redevelopment is delivered in line with the Council's climate aspirations.</p>

	Action	Timescale	Lead (others involved in italics)	Cost and funding	Project status: draft proposal, final proposal, implementing	Progress Update
4	Undertake an investment grade audit of the Council's commercial building stock and physical assets in the corporate portfolio to identify the opportunities for retrofit to zero carbon and the likely costs. Include Sutton Housing Partnership residential properties in this audit.	Ongoing	Energy Manager	Cost of study determined by tender, may be possible to demonstrate an 'invest to save' approach.	Implementing	Investment Grade Audits continued throughout 2024 with 15 audits completed and reports delivered. Analysis of the reports is ongoing to investigate the feasibility of introducing carbon and energy reducing technologies.
5	SUPERSEDED: Produce a technical construction guide setting out the environmental construction standards we are aiming for on council-led schemes and council-owned property, encompassing major works, general maintenance and repairs. Work with our contractors to learn from their experience.	2023/24	Head of FM Client Head of Programme and Project Management Head of Climate Action and Emergency Planning	Additional funding required to commission this.	Draft proposal	This work has been superseded by the Pathways to Net Zero work, the outcome of which will be used to inform this. In the interim period, the council has trialled a number of approaches to deliver schemes in accordance with its climate commitments (see action 3 above).
6	Highlight to commercial tenants opportunities to access funding for retrofit, boiler upgrades, energy efficiency measures etc. from the government, Mayor of London etc.	Ongoing	Head of Asset Management	Promotion of scheme. Funding met from existing budgets.	Implementing	This continues to be raised with tenants where opportunity arises.
7	NEW: Ensure the new St. Nicholas re-development progresses the ambitious aims towards a low carbon development and builds in mechanisms for further sustainability and climate adaptation actions	2024 - 2034	Programme Lead - Sutton Civic and Town Centre Regeneration	Costs to be identified through the procurement and design process.	Implementing	A developer has been appointed for the design and delivery of the St. Nicholas Centre regeneration. The council's Sustainability Manager was involved in the procurement process. Work is underway to incorporate sustainability outcomes into a section of the development agreement. Following the necessary design and consultation, works on the redevelopment are expected to start in 2027.

Action	Timescale	Lead (others involved in italics)	Cost and funding	Project status: draft proposal, final proposal, implementing	Progress Update	
8	NEW: As the opportunity and funding arises, install renewable and low carbon energy solutions, and other carbon reduction measures, in council owned buildings.	Energy Manager	External Funding required	Implementing	<p>£129,000 of funding was secured in 2024 from Sports England’s swimming pool grant to install 528 Solar PV panels on Westcroft Leisure Centre, to be topped up with council capital funding. Installation is expected to be completed by March 2025. This will produce an energy output of 264 kWp.</p> <p>Funding from the Public Sector Decarbonisation Fund was secured in 2023 and has delivered carbon reduction measures at Sutton Youth Centre, including solar PV and air source heat pump.</p>	
COUNCIL FLEET:						
9	COMPLETE: At the end of the current contract, switch as many of the Council's small fleet vehicles as possible to electric and encourage partners to do the same.	2024/25	Programme & Resources Manager (Parking & CCTV)	Cost to be determined by procurement activity.	Implementing	<p>Contract awarded leading to rationalisation and reduction of three vehicles from previous contract.</p> <p>Five vehicles have now been converted from petrol/diesel to electric.</p>
10	NEW: Continue to explore funding and mechanisms for switching the remaining council small fleet to electric vehicles.	Ongoing	Programme & Resources Manager (Parking & CCTV)	Cost to be determined as opportunities arrived. Additional funding required.	Implementing	<p>Some fleet vehicles were not converted due to cost, services under review or no suitable electric alternative available.</p>
11	COMPLETE: Understand the feasibility and costs of installing the electric charging infrastructure needed at the Council’s Civic Offices to enable Mitie to switch to electric vans and to support the Council’s switch at the end of the contract. On-street charging points delivered for residents and businesses are also important to support this.	2023/24	Energy Manager Head of FM Client	An additional electricity was required with a budget of £461,000.	Implementing	<p>Installation of a new electricity supply has been completed and is being used by fleet delivering council services. A plan is being formulated for the ongoing management of the EV charging stations via the FM team to support the council’s electric fleet and our partners.</p>

Action		Timescale	Lead (others involved in italics)	Cost and funding	Project status: draft proposal, final proposal, implementing	Progress Update
12	NEW: Work with council contractors and partners to successfully utilise new EV charging points and Civic Offices, supporting a reduction in fleet emissions.	2024/25	Energy Manager Head of FM Client	Cost within existing resources.	Implementing	Progress update as per the above.
13	Work with the existing provider to switch the Mayor's vehicles to electric where possible and include in the specification when next procured.	2023/24	Committee Services Manager	Costs were identified through a tender process; with the provider quoting a significant uplift.	Draft proposal	The procurement of a new contract was undertaken in Autumn 2023. Due to the significant uplift in cost associated with switching the Mayor's vehicle to electric it was not deemed viable. This situation will continue to be monitored.
14	UPDATED: Work with Veolia, Viridor and other suppliers to develop plans to trial and then transition to a fully zero carbon vehicles.	As funding and technology allows.	Head of Waste and Street Cleansing and Waste Strategy Manager <i>Contract managers as applicable</i>	Detailed cost implications to be confirmed during the procurement process.	Draft proposal	<p>The depot that the waste collection and street cleansing services operate from will be brought back into the borough with EV charging provisions and solar PV. The new Waste and Street Cleansing contract will see the introduction of electric street cleansing vehicles.</p> <p>Saba (parking enforcement contractor) are trialling EV vehicles.</p> <p>The EV charging points at Sutton Civic Officers will support contracted partners such as Mitie to use EV vehicles.</p>

Action		Timescale	Lead (others involved in italics)	Cost and funding	Project status: draft proposal, final proposal, implementing	Progress Update
STREET LIGHTING AND ELECTRIC VEHICLE CHARGING:						
15	<p>Complete the street lamp column (concrete replacement) and LED lighting rollout by 2027.</p> <p>Replacing concrete street lamp column stock will allow implementation of future EV charging points on street lamp columns.</p>	Ongoing until 2027. Delivery to be completed by 2026	<p>Design and Delivery Manager (Highways)</p> <p>Principal Engineer Street Lighting</p>	Following approval of the programme and confirmation of funding, the 4 year delivery programme commenced in April 2023 - £5.6M	Implementation	<p>The current phase of works has been completed. 5,281 lanterns have been replaced and 2,182 concrete columns upgraded (which are future proofed to all installation of EV charging points) since February 2024, amounting to 86% of our lighting stock completed.</p> <p>Further funding to allow the completion of the project is due for decision as part of the Medium Term Financial Plan.</p> <p>The next and final stage (2025/26) will complete the remaining LEDs, upgrade the remaining 700 concrete columns & look at 1980s/1990s steel columns. Central Management Systems will be installed.</p>
16	Work with other local authorities and industry experts to identify opportunities to reduce the carbon intensity of road resurfacing materials.	As opportunities and technology allow.	Design and Delivery Manager	To be met from existing budgets or external funding bids.	Implementing	Two sections of highway were resurfaced with recycled materials in 2022/23. There is currently a cost implication associated with alternative materials with a reduced durability factor which makes them unviable to use at this time. Active discussions are being had with the Contractor to stay aware of the developments in technology and materials which would facilitate these types of changes.

Action		Timescale	Lead (others involved in italics)	Cost and funding	Project status: draft proposal, final proposal, implementing	Progress Update
17	Build upon previous successes, securing funding to install electric vehicle charging points on residential roads and at key places across the borough where this supports a switch away from more polluting vehicles, with an aim to install 100 points a year.	<p>As opportunities and technology allow.</p> <p>For lamp column charging - this will be aligned with the lamp column replacement programme where unsuitable lamp columns are currently located.</p>	Electric Vehicle Project Officer	Government and TfL funded programme of electric vehicle charging points.	Implementing	<p>The council, in partnership with the Royal Borough of Kingston upon Thames, applied for, and were granted Local EV Infrastructure funding (LEVI).</p> <p>The LEVI Fund has two main objectives:</p> <ul style="list-style-type: none">▶ Deliver a step-change in the deployment of local, primarily low power, on-street charging infrastructure across England.▶ Accelerate the commercialisation of, and investment in, the local charging infrastructure sector. <p>Applicants must show that the majority of charge points will benefit residents who do not have off-street parking.</p> <p>For London boroughs, the LEVI Fund is provided on the basis of borough “partnerships” - this means that joint procurement of charging points must occur and the funding provided needs to benefit across all boroughs in the partnership.</p> <p>To use this funding requires a three Stage process, reporting to Energy Savings Trust and the Office for Zero Emission Vehicles (OZEV). OZEV has ultimate approval of projects.</p> <p>It is expected that procurement would occur Spring 2025 at the earliest, subject to approval.</p> <p>A new EV Charging Strategy covering the key procurement and delivery model options was approved at E&ST Committee in January 2024.</p>

Action		Timescale	Lead (others involved in italics)	Cost and funding	Project status: draft proposal, final proposal, implementing	Progress Update
COUNCIL HOUSING - SUTTON HOUSING PARTNERSHIP:						
18	Develop plans for low-carbon alternatives to individual gas boilers in new and existing homes.	2020 - 2022	Director of Asset Investment and Sustainability (Sutton Housing Partnership)	<p>Funded through the Housing Revenue Account (HRA).</p> <p>£31m committed to achieve EPC C as part of the HRA Capital programme (2025 - 2030).</p>	Proposal	<p>A bid has been submitted to the GLA's Zero Carbon Accelerator Programme to support development of a Decarbonisation Strategy for the properties managed by Sutton Housing Partnership. This will focus on achieving EPC C as a minimum for all properties as part of a longer term routemap to net zero.</p> <p>It should be noted delivery is expected to be challenging, inclusive of Housing Revenue Account budget limitations.</p>
19	Improve the SAP (Standard Assessment Procedure) rating of the housing stock by delivering energy efficiency improvements planned as part of the Housing Revenue Account (HRA) capital programme. These include major repairs, improvements to council stock and redevelopment of estates.	The current HRA Business Plan covers the period 2020/21 to 2049/50.	Director of Asset Investment and Sustainability (Sutton Housing Partnership) Housing Strategy and Commissioning Manager	Projected expenditure is set out in the HRA Business Plan.	Implementing	<p>The Social Housing Decarbonisation Fund (SHDF) wave 1 retrofit projects have now been completed as has the retrofit of 23 properties via the Energiesprong project. SHDF wave 2 works have been procured with a contract approved by HEB Committee in July 2024. Works have commenced on the 90 homes. An extension to the delivery deadline (March 2025) is to be requested to ensure that the grant condition is met. An application has been submitted for the wave 3 of the SHDF programme.</p> <p>The Decarbonisation Strategy identified in the row above will be developed to provide the route map to improve energy performance of all stock to minimum EPC C level, (currently around 2,400 are D or below).</p>

Action		Timescale	Lead (others involved in italics)	Cost and funding	Project status: draft proposal, final proposal, implementing	Progress Update
20	FINISHED (PARTIAL-COMPLETION): Retrofit a further 75 council properties as part of the Energiesprong project.	June 2022	Retrofit Programme Manager (Sutton Housing Partnership)	£8m in total. £4.3m from the Housing Revenue Account; remaining funding from GLA, BEIS and ECO3i. Ashden / Friends of the Earth toolkit suggests a carbon reduction of 275 tonnes CO2.	Implementing	23 properties were successfully retrofitted as part of the Energiesprong project. These incorporated whole house retrofits including wall insulation, solar PV and heat pumps. A further 40 were planned via the 45 Thicket Crescent scheme, which would have taken the total to 63, however this scheme was not progressed due to grant funding risks. The Thicket Crescent scheme has sought to include retrofit across both blocks rather than one, (i.e. nearly 65 homes instead of 40) however these will not be to the Energiesprong standard.
21	Assess the feasibility for retrofit of the next 1,800 council properties already identified as potentially suitable and develop a business case.	2022/23	Retrofit Programme Manager (Sutton Housing Partnership)	Between £20k and £100k per property, so an estimated £130m - £650m. This will require funding from the government. Ashden / Friends of the Earth toolkit estimates this could save 17,875 tonnes of CO2.	Implementing	As identified in action 18, SHP will seek to develop a decarbonisation strategy that will provide a costed route map to deliver retrofit for the approximately 2,400 homes that are less than the required EPC C minimum (Government target).
22	Develop plans to retrofit the remaining council properties to zero carbon standard (6,600 properties in total) through feasibility studies and development of a business case.	2020 - 2030, approx. 600 units per year.	Retrofit Programme		Draft proposal in progress	

Action		Timescale	Lead (others involved in italics)	Cost and funding	Project status: draft proposal, final proposal, implementing	Progress Update
NEW-BUILD COUNCIL HOUSING AND ESTATE REGENERATION:						
23	Seek to secure the budgets to enable all new-build council homes and estate regeneration projects led by the Council to be built or retrofitted to a zero carbon standard.	Ongoing	Head of Housing Enabling and Development	Ashden / Friends of the Earth toolkit estimates an increased cost of 7%. This will require changes to the allocation of government funding for new build housing for local authorities and housing associations.	Implementing	<p>The first Passivhaus social housing was completed in November 2024 on Woodcote Road in Wallington, providing 11 flats certified to a “Passivhaus” zero carbon standard. A further four flats and five houses, to be built to Passivhaus standard, are underway on Beddington Lane, and will be completed in November 2025.</p> <p>92 new homes in the Beech Tree Place redevelopment are expected to achieve ‘net zero carbon’ as defined by the GLA, with an on-site reduction in carbon emissions of at least 65% beyond current Building Regulations. These are scheduled for completion in June 2026.</p> <p>In addition, the Elm Grove regeneration scheme will start on site in May 2025, which will also produce 141 affordable homes to net zero carbon standards.</p>

Action		Timescale	Lead (others involved in italics)	Cost and funding	Project status: draft proposal, final proposal, implementing	Progress Update
PLANNING:						
24	Ensure that all major residential and commercial developments achieve net 'zero carbon' standards in line with London Plan Policy SI 2 and Policy 31 of Sutton's current Local Plan by maximising on-site emissions reductions by at least 50% against the Part L 2021 baseline and offsetting the remaining on-site emissions by securing developer contributions to fund appropriate carbon reduction schemes offsite.	Ongoing - implemented via the development management process.	Senior Planner Development management team (planning case officers)	On-site carbon reduction costs included as part of construction costs and met by developers. Carbon offset cost, currently priced at £95 per tonne over 30 years. This is delivered through developer contributions secured via a Section 106 agreement.	Implementing	<p>A total of £126,186.14 of carbon offset funding was available to spend from four major residential developments which had commenced on site and a further £3,694.33 of carbon offset funding was due. As of autumn 2024, it was estimated that a total of £744,311.40 could potentially be secured in future from major residential developments which have yet to commence (offsetting 316.5 tonnes of CO2 per annum).</p> <p>A carbon offset fund allocation procedure is currently being developed as part of new Governance arrangements for Sutton's carbon offset fund. This is expected to be introduced in 2025.</p>
25	Develop a pipeline of suitable energy efficiency, renewable energy and fuel poverty projects that can be implemented using the carbon offset fund.	2024	Sustainability Manager	Feasibility studies will require funding. May be possible to demonstrate return on investment. Carbon offset funds can be used to deliver carbon saving projects.	Final proposal	A review of the Council's Carbon Offset fund governance has been undertaken in line with the guidance issued by the Mayor of London. Plans are in place to launch the scheme internally for applications imminently.

Action	Timescale	Lead (others involved in italics)	Cost and funding	Project status: draft proposal, final proposal, implementing	Progress Update
<p>26 As part of the Local Plan review, strengthen the Council's planning policies on climate change mitigation in order to:</p> <ul style="list-style-type: none"> ▶ ensure that all residential and commercial developments achieve 'net zero carbon' standards in line with the Council's commitments in Sutton's Environment Strategy and Climate Emergency Declaration; ▶ ruling out the use of gas boilers borough-wide; ▶ review the definition of a 'net zero carbon building' to give consideration to unregulated emissions (e.g. equipment and appliances) as well as regulated emissions covered by Part L of the Building Regulations; ▶ review how on-site performance is measured by either continuing to set targets based on a percentage reduction in regulated carbon emissions over the Part L 2021 baseline or setting absolute targets for each of the following key attributes: space heating demand; energy use intensity (EUI) and maximising renewable energy generation; ▶ strengthen requirements for undertaking Whole-Life Carbon Assessments and Circular Economy; ▶ incorporate an energy masterplan and updated planning policies as part of the new Local Plan for extending low or zero carbon district heating networks to serve new and existing developments within Sutton Town Centre. 	<p>Publication of Draft Local Plan for public consultation (Regulation 19 stage) by Summer 2025.</p>	<p>Strategic Planning Manager</p>	<p>Additional funding required for the updating of the Local Plan.</p>	<p>Draft proposal</p>	<p>The Local Plan Issues & Preferred Options document published for consultation in the summer 2024 sets out much stronger policy requirements on promoting net zero carbon standards in new developments compared to the current Local Plan 2018, which are fully aligned with the aims of Sutton's Climate Emergency Response Plan. The key policies are:</p> <ul style="list-style-type: none"> ▶ Draft Policy 3 on 'Net Zero carbon' - the Council will promote the delivery of a Net Zero Carbon borough over the Local Plan period by: achieving net zero carbon standards in all new developments and major refurbishments; working with partners to develop/expand low or zero carbon district heat networks; achieving net zero carbon standards in all new council housing and estate regeneration schemes; implementing retrofit of existing council housing and assets; promoting low carbon circular economy in construction. ▶ Draft Policy 42 - this sets out a range of evidence based technical standards on all aspects of energy performance which would need to be demonstrated by all proposed developments and puts forward a recommended approach based on minimum absolute energy performance standards for aspects such as energy use intensity (EUI); space heating demand and renewable energy generation. The recommended approach - based on the Delivering Net Zero study commissioned by the Council in partnership with other London Boroughs - takes into account unregulated emissions and 'embodied carbon' for the first time and is tailored to account for the characteristics of different development types.

	Action	Timescale	Lead (others involved in italics)	Cost and funding	Project status: draft proposal, final proposal, implementing	Progress Update
COUNCIL POLICY AND DECISION MAKING:						
27	Review existing policies for potential conflicts with zero carbon and sustainability commitments, and identify options to address this.	As and when potential conflicts are identified.	Head of Climate Action and Emergency Planning	Undertaking this on an ad hoc basis means this can be met from existing resources. Additional resources required for wholesale review.	Implementing	Climate Impact Assessments (action 1, cross-cutting) will help to address this work.
28	Use the pension fund's policy on Responsible Investment and its membership of local, national and international investor forums to drive company improvements on sustainability and governance, and support the transition to a lower carbon economy through investment selection.	The Pensions Committee adopted a new Responsible Investment policy in June 2020. The pensions committee is required to review its investments every 3 years.	Head of Pension Investments and Treasury	Additional costs of implementing Responsible Investment policy to be borne by the Pension Fund.	Implementing	The Fund has now approved a revised responsible investment policy including interim 2030 carbon reduction targets to help track our progress towards our net zero by 2050 target for the Pension Fund. The fund has now implemented its new Investment strategy including investments in renewable infrastructure, affordable housing and sustainable office buildings.
29	Develop a Climate Budget and incorporate into the Council budget planning process	Initial climate budget to be incorporated in 2025/26 council budget.	Head of Climate Action and Emergency Planning / Sustainability Manager	Developed within existing resources, however additional funding will be required to implement the climate budget.	Implementing	<p>A climate budget has been incorporated into the Council's 2025/26 Medium Term Financial Plan and was approved by Strategy and Resources Committee in February 2025.</p> <p>The budget looks at scope 1 and 2 emissions at present with an ambition to increase its remit in future years.</p>
Target: The Council will switch to a renewable electricity supply from April 2021.						
ENERGY USE:						
30	Develop and deliver a plan for installing renewable energy generation and insulation across the Council estate e.g. solar panels, air source and ground source heat pumps.	2022/23 - as part of pathways project work.	Energy Manager	Feasibility studies will determine costs. External funding will be required such as the Public Sector Decarbonisation Fund.	Implementing	Sustainability Audits continued throughout 2024 with the reports being analysed by Mitie to produce a pipeline of projects with a potential external funding application being considered.

	Action	Timescale	Lead (others involved in italics)	Cost and funding	Project status: draft proposal, final proposal, implementing	Progress Update
31	Maintain the use of fully renewable electricity across 100% of the Council's estate. This will be procured either through a Power Purchase Agreement or a REGO-backed supplier green tariff.	Annually	Energy Manager	Met from existing council budgets.	Implementing	The continued use of fully renewable electricity is procured through a REGO-backed supplier.
32	COMPLETE: Produce a borough-wide pathway to net zero which identifies actions, potential costs and key stakeholders.	2022/23	Head of Climate Action and Emergency Planning	£40,000	Implementing	As referenced in action 2, a net zero road map report was presented to and noted by the Environment and Sustainable Transport Committee on 10 October 2024. This sets out a high-level road map for decarbonising the borough. Over 750 actions have been analysed and prioritised in terms of carbon and cost effectiveness. The most carbon effective actions relate to retrofit of buildings while the most cost effective actions include switching petrol or diesel journeys to more sustainable modes of transport.
SUPPORTING ACTION BY OTHERS:						
33	Support community energy schemes in the borough: promote opportunities for residents, businesses and community groups to generate their own energy locally e.g. solar panels, ground source or air source heat pumps, as well as options to reduce energy use or improve carbon emissions, for example through boiler replacement schemes.	Ongoing - as opportunities arise.	Sustainability Manager	This cannot be resourced at the present time. External funding is currently available through the GLA.	N/A	This action requires additional resources and community interest. Community groups may be independently applying to the GLA funding without the Council's involvement.

Action	Timescale	Lead (others involved in italics)	Cost and funding	Project status: draft proposal, final proposal, implementing	Progress Update
34 Extend the Sutton Decentralised Energy Network to deliver low carbon energy to new and existing developments across the borough and realising up to 5,000 tonnes of carbon emission savings per annum, based on viability study and financial business cases.	Business case to be submitted to Council for the Lavenders estate in early 2024. Recommendation options for major expansion works to Sutton town centre and the London Cancer Hub site forecasted to be presented in Spring 2024.	Managing Director of SDEN	Estimated capital costs of c£2.1m for the Lavenders estate project. Capital costs for Sutton Town Centre and London Cancer Hub (LCH) to be determined in due course. Access available to the DESNZ Green Heat Network Fund for up to 50% of capital costs. The Sutton Town Centre and London Cancer Hub projects potentially offer opportunities for external investors.	Draft proposal	Energy modelling has now been completed for the London Cancer Hub (LCH) site. Sutton Decentralised Energy Network (SDEN) is progressing with energy supply proposals for the LCH partners which will be submitted in October 2024. Once Heads of Terms are agreed with the LCH partners, SDEN and the Council will explore investment options in order for the project to progress. Funding has been secured through the Green Heat Network Fund and a business case approved by the Council for the expansion of SDEN to the Clarion Housing Lavenders Estate. Heads of Terms have been agreed with Clarion.
35 Work with partners, businesses and interested organisations on projects and initiatives that reduce borough-wide emissions.	From 2021/2022	Climate Partnership Manager Businesses, Business Improvement Districts, voluntary and community organisations	Cost will be met by a partnership fee by participating businesses.	Implementing	The Green Enterprise Partnership's Go Green Scheme offers tax incentives for up to two years to businesses progressing through a four-step green business certification process. Following the pilot stage in 2023, the initiative has expanded, onboarding 70 new businesses, which now cover nearly 5% of all rateable properties in the borough. This makes it the largest green business technical assistance programme in London.

Focus Areas: Take action to tackle fuel poverty.

Action		Timescale	Lead (others involved in italics)	Cost and funding	Project status: draft proposal, final proposal, implementing	Progress Update
FUEL POVERTY:						
36	Deliver ‘Sutton Healthy Homes’, a borough-wide home energy advice service to support residents to increase the energy efficiency of their homes. The scheme will prioritise support for vulnerable residents and those either at risk of, or living in fuel poverty, helping them to access grants and information to reduce their fuel bills and improve the thermal efficiency of their homes.	2023 - 2025	Environment Projects Officer Public Health Projects Officer Partnership Manager (Sutton Housing Partnership)	Service currently funded until March 2025.	Implementing - funded until March 2025.	All 200 funded energy advice and advocacy support cases, to support vulnerable people most at risk from the effects of living in fuel poverty, are on track for delivery. Additional funding has been secured through membership of South London Energy Efficiency Partnership.
37	Implement actions identified through monitoring of the ‘Sutton Healthy Homes’ service and from best practice elsewhere, to tackle fuel poverty in Sutton within the framework of Sustainable Warmth and the Fuel Poverty Action Plan for London.	Ongoing - annually	Environment Project officer	Additional funding will be needed to deliver support across the whole borough.	Implementing	Sutton accessed the Home Upgrade Grant for residents without gas central heating, on a low income and in hard-to-heat homes, to gain free home energy efficiency upgrades. Due to the restrictive eligibility criteria, there have been low referral numbers for this scheme, which has been reflected nationally in under delivery. Installations will continue until March 2025. Application routes for the Warm homes Local Fund and Warm Homes Social fund are currently being considered.

CREATING A CIRCULAR ECONOMY

The vision: Waste will be reduced and a circular economy created.

Target: Reduce waste and increase reuse and recycling from 50% year on year and target being the best recyclers in the UK.

Target: Help residents reduce the amount of avoidable food waste they throw away by 20% by 2025.

Action	Timescale	Lead (others involved in italics)	Cost and funding	Project status: draft proposal, final proposal, implementing	Progress Update
REDUCING WASTE, ENCOURAGING REUSE AND INCREASING RECYCLING:					
1 Implement the Waste Minimisation Strategy and Reduction and Recycling Plan (RRP). Key areas of action include: <div><div>▶ Reduce waste;</div><div>▶ Maximise recycling;</div><div>▶ Reduce the environmental impact of waste;</div><div>▶ Maximise the use of local waste sites;</div><div>▶ Be innovative;</div><div>▶ Lead by example with our own waste.</div></div>	Ongoing The RRP is updated annually and published on the London Data Store	Waste Strategy Manager Contract & Performance Officer	Associated project costs to be identified individually. Some elements may be funded through the Community Infrastructure Levy and S106.	Implementing	The Reduction and Recycling Plan received committee approval in spring 2023 and action updates are reviewed regularly by the Greater London Authority (GLA). The latest update of the RRP (July 2024) received good feedback from the GLA highlighting: <div><div>▶ Positive initiative in funding ‘free borrows’ at the Library of Things for low incomes families to support them during the cost-of-living crisis.</div><div>▶ Supported Repair Café sessions in the borough.</div><div>▶ Positive results following the targeted food participation scheme, and the communal waste review trial to reduce contamination.</div><div>▶ Strong plans for developing the new waste depot with green technologies.</div><div>▶ Positive plans for service improvements as part of the new waste collections contract.</div></div>

	Action	Timescale	Lead (others involved in italics)	Cost and funding	Project status: draft proposal, final proposal, implementing	Progress Update
2	NEW: Mobilise the new waste and street cleansing contract, supporting the council's waste minimisation strategy.	From April 2025	Head of Waste and Street Cleansing	Met from existing budgets	Implementing	In April 2024, following an extensive procurement process, Veolia were awarded the new waste and street cleansing contract for Sutton, to commence in April 2025 for a period of 8 years. The new contract will extend and improve services already provided by the Council and support the Environment Act 2021 simpler recycling regulations that are to be implemented between 2025 to 2027. New services include a bookable small items collection trial, for items such as batteries, textiles and small electricals.
3	Promote 'Refill Sutton' where local businesses and organisations refill water bottles for free and sign up more businesses, year-on-year.	Ongoing - annually.	Waste Strategy Manager	Met from existing budgets.	Implementing	The Refill Sutton campaign continues and new businesses are able to sign themselves up directly to the programme. With the expansion of Refill to cover other receptacles, for food and shopping, businesses have also added themselves to the Refill map to signpost to wider refill services. There are now over 60 businesses in the borough taking part in the Refill Sutton Campaign.
4	Recommission the borough textile banks service.	2024	Waste Strategy Manager	Met from existing budgets.	N/A	Work to commence quarter 2/3 2025/26 utilising a pan-London framework to procure this service.
5	NEW: Deliver an enforcement programme for the prevention of use of single use plastics by businesses, in line with new government legislation	Ongoing	Team Leader, Commercial and Trading Standards	Met from existing budgets	Implementing	The new Single Use Plastics Enforcement Policy was agreed at HEB committee in September 2024. This policy will provide clarity as to how the Sutton Trading Standards Service will enforce government legislation concerning Single Use Plastics, to prevent the supply of these items from polluting the environment and contributing to climate change.

	Action	Timescale	Lead (others involved in italics)	Cost and funding	Project status: draft proposal, final proposal, implementing	Progress Update
6	NEW: Procure and deliver the new environmental enforcement contract to support improvements in the local environment.	2024 - 2029	Head of Waste and Street Cleansing	Costs determined in the procurement process.	Implementing	A procurement exercise was completed in 2024 and a new contract for 3+1 years has commenced with Kingdom. This follows a successful two year pilot which yielded a number of positive results including a 16% reduction in flytips and a significant reduction in littering of up to 69% in some areas.
7	Continue to maximise the number of materials collected for recycling, at the doorstep and at the recycling centre.	Ongoing	Head of Waste and Street Cleansing and Waste Strategy Manager	Detailed cost implications to be confirmed during the procurement process.	Final Proposal	The Council will implement waste collection services in April 2025 that extend and improve the services already provided by the Council and support the Environment Act 2021 simpler recycling regulations that are to be implemented between 2025 to 2027.
8	As waste processing technology changes, identify new options to recycle more materials that are currently thrown away as rubbish, and target zero waste.	Ongoing	Head of Waste and Street Cleansing	Approximately £20k, met from existing council budgets.	N/A - Completed	Waste composition analysis of flats and kerbside collections was completed in 2022 and has been used to undertake targeted communications.

Focus area: Embed sustainable procurement into the Council’s buying and contracts.

DECISION MAKING AND PROCUREMENT:

9	Finalise Sutton Council’s sustainable procurement policy and strategy to focus on circular economy and achieving zero carbon goals, and embed into Sutton’s procurement delivery plan. Provide sustainable procurement training for commissioning staff to ensure implementation.	Ongoing	Environment Projects Officer, Procurement team	Met from existing budgets.	Draft proposal	A new sustainable procurement policy and strategy received Strategy and Resources Committee approval in February 2025.
---	-----------------------------------------------------------------------------------------------------------------------------------------------------------------------------------------------------------------------------------------------------------------------------------	---------	------------------------------------------------	----------------------------	----------------	------------------------------------------------------------------------------------------------------------------------

Focus Areas: Encourage businesses to switch to circular economy business models.

Action	Timescale	Lead (others involved in italics)	Cost and funding	Project status: draft proposal, final proposal, implementing	Progress Update	
REDUCING WASTE, ENCOURAGING REUSE AND INCREASING RECYCLING:						
Supporting others to take action						
10	Offer an audit and advice service for small businesses, charities and community organisations with premises, helping them access grants and information on environmental improvements.	Ongoing	Climate Partnership Manager	Met from internal resources .	Implementing	Delivery via the Green Enterprise Partnership or with internal resources (i.e. officer time).
11	Work with partners, businesses and interested organisations on projects that implement circular economy principles and demonstrate the potential of the approach.	From 2021/2022	Climate Partnership Manager Businesses, Business Improvement Districts,, voluntary and community organisations and South London Waste Partnership	Seeking funding from external sources.	Draft proposal	'Meanwhile' project to establish a circular economy hub in Sutton developed; seeking external sources of funding. Supported volunteer residents to launch two Repair Cafes in 2022 and Launched Sutton Library of Things in 2022.

Action		Timescale	Lead (others involved in italics)	Cost and funding	Project status: draft proposal, final proposal, implementing	Progress Update
12	Work with local businesses and skills and training providers to develop the local supply chain needed to achieve building retrofit goals and support a local green economy. Support local people to access the training needed for these jobs.	Ongoing	Head of Inward Investment Green Skills Academy is led by South London Partnership	Additional funding is expected to be required to deliver training programmes, however, promotion will be met from existing budgets.	Implementing	<p>This is led by South London Partnership (SLP), which Sutton is a member borough of.</p> <p>SLP is on the Pan-London Green Skills and Workforce Working Group. Through this, they are refreshing the green skills and jobs data and exploring a framework for social value to support green skills development and delivery.</p> <p>Outputs are delivered through the Green Skills Academy Hub – including development of new courses and green skills specific job clubs with Jobcentre Plus.</p> <p>SLP is part of the London Retrofit Steering Group and has developed a South London Retrofit Roadmap https://retrofitskills.org/resources/. SLP are working with GLA to feed into the development of the London Office for Retrofit Innovation.</p>

COUNCIL OPERATIONS:

13	When the Council refurbishes, consolidates or moves buildings, reuse as much office furniture, stationery and building fabric as possible, either elsewhere in the Council or by offering it to others, and apply the 'circular office' approach.	Ongoing - as building changes take place.	Head of FM Client <i>Sustainability Manager</i>	Potential cost to join reuse platforms, can be met from existing budgets.	Implementing	No major office moves planned in the short term. Supported the movement of Encompass back into the council operations / office and will be utilising furniture across council sites and offering unneeded furniture to community groups and schools.
----	---------------------------------------------------------------------------------------------------------------------------------------------------------------------------------------------------------------------------------------------------	-------------------------------------------	--------------------------------------------------------	---------------------------------------------------------------------------	--------------	------------------------------------------------------------------------------------------------------------------------------------------------------------------------------------------------------------------------------------------------------

TACKLING CLIMATE CHANGE

Target: Retain Sustainable Food City status each year.

Action		Timescale	Lead (others involved in italics)	Cost and funding	Project status: draft proposal, final proposal, implementing	Progress Update
PLANNING:						
1	Deliver the Local Plan Policy 25b (open spaces) on allotments and promote allotment plot availability.	Ongoing	Planning Officer - Strategic Planning	Met from existing council budgets.	Implementing	Local Plan Policy 25b continues to be applied as appropriate in order to promote allotment plot availability.
DECISION MAKING AND PROCUREMENT:						
2	SUPERSEDED: Extend sustainable catering commitments to the meals on wheels contract and other food outlets under Council-let contracts e.g. library and parks cafes.	Ongoing - as contracts / tenancies are renewed.	All managers of services with food-related services or contracts e.g. Meals on Wheels, Library Cafes, Park cafes etc.	Contract changes are the best time to incorporate this. There is likely to be an increase in cost.	Implementing - schools	This has been superseded by the development of a wider sustainable procurement policy which includes action on reducing the impact of food purchased by the council.
Target: Work with SES Water to help people reduce their daily water use to 138 litres by 2025.						
This work is delivered via the SES Water Resources Management Plan, however, actions below relate to how the Council is working to reduce its own water use.						
COUNCIL OPERATIONAL BUILDINGS:						
3	Identify if there are cost-effective options to improve the Council's water efficiency in its buildings (e.g. toilets, taps).	Ongoing - annual review.	Energy Manager ADSM (the Council's water provider).	Funded by AquaFund, operated by council water provider ADSM. Water efficiency technologies have been implemented throughout the corporate estate such as automated meter reading devices and urinal and water flow control devices being fitted. As new technology develops they will also be used.	Implementing	ADSM (the council's water Supplier) continue to monitor the water consumption using automated reading devices (AMR) and introduce water efficiency technologies as appropriate

	Action	Timescale	Lead (others involved in italics)	Cost and funding	Project status: draft proposal, final proposal, implementing	Progress Update
4	Review water usage in services using high volumes of water e.g. parks.	Ongoing - annual review.	Energy Manager ADSM (the Council's water provider).	Funded by AquaFund, operated by council water provider ADSM. All sites are monitored and any unusual usage is communicated by exception reports sent directly to staff.	Implementing	ADSM monitors water consumption and alerts the Council of any unusual usage via exception reports which are then acted upon by site staff.

Focus area: Raise awareness of the climate emergency, the impacts of climate change on Sutton, and the actions individuals can take.

ENCOURAGE INDIVIDUAL ACTION ON THE CLIMATE EMERGENCY:

5	Raise awareness of the climate emergency and encourage behaviour change e.g. paving over gardens, fast fashion, reuse, water reduction, food waste, cycling and walking.	Ongoing	Sustainability Manager Communications and Engagement Officer	From existing budgets. We will apply for funding where this would support or increase our environmental work or communications.	Implementing	Various resident communications have taken place including promotion of Fairtrade Fortnight, Food Waste Action Week, Repair Week, e-cargo bike hire, Library of Things, household energy support, local sustainability events and initiatives, including repair cafes, and Sutton Community Environment Champions.
6	Maintain information on the Council's website about the actions people, businesses, landlords and organisations can take on climate change, with links to guidance and expertise.	Ongoing	Environment Projects Officer	Met from existing budgets.	Implementing	This information is available on the What You Can Do page on the council website and is updated as new resources and opportunities arise. Information is also available on the Green Enterprise Partnership, supporting businesses to take action, as well as a dedicated page with resources for landlords.
7	Work with schools, charities, environmental groups, businesses, business groups and interested partners to raise awareness and support action. Explore ways to celebrate and recognise action.	Ongoing	Head of Climate Action and Emergency Planning	Additional officer is required to undertake this in a meaningful and consistent way.	N/A	The focus of this work has been on supporting businesses to take action via the Green Enterprise Partnership and the individuals via the Community Environment Champions.
8	Work with and support the London Councils Climate Programmes to develop the case for legislative and regulatory change, investment and leadership at national level to respond to the climate emergency.	Defined in each of the climate programmes' action plans.	Head of Climate Action and Emergency Planning	Funding requirements and borough contributions are being determined by each programme lead.	Implementing	The Council continues to participate in the London Council's Climate Programmes and work in Sutton was recently recognised by the Green and Resilient work stream as best practice for embedding climate action into organisational governance.

	Action	Timescale	Lead (others involved in italics)	Cost and funding	Project status: draft proposal, final proposal, implementing	Progress Update
VOLUNTEERING:						
9	Maintain a network of community environment champions to encourage friends, neighbours and colleagues to take action on climate change.	Ongoing since 2021 launch of network.	Environment Projects Officer	Met from existing budgets.	Implementing	The network consists of over 80 members, of which a number meet every 2 months to progress ideas and support council activity. The network continues to grow and improve its approach and has facilitated activity such as the establishment of the Sutton Repair Cafe. Sub-groups have been exploring possible projects for the future. The group receives a bi-weekly newsletter providing news, updates and ways for them to get involved in climate action.
INCREASING RESILIENCE TO CLIMATE CHANGE:						
10	Use the Climate Just framework to work with people identified as being vulnerable, as well as with the community and voluntary sector and places such as care homes and hospitals to build knowledge and action when there is a risk of heat waves, excess cold or flooding.	2022/23 (delayed due to COVID-19).	<p>Head of Climate Action and Emergency Planning</p> <p>NHS Clinical Commissioning Group, voluntary and community services.</p> <p>Colleagues from Public Health, Communications, Social Services and Emergency Planning.</p>	Additional funding and resources required to progress.	Draft proposal	A pilot with 10 care homes in the borough is currently underway as part of the Green Enterprise Partnership's initiative. This pilot offers free technical assistance to care providers, helping them develop comprehensive sustainability strategies with a particular emphasis on climate adaptation. It focuses on the connection between climate action and public health and the need to support some of our most vulnerable residents.

	Action	Timescale	Lead (others involved in italics)	Cost and funding	Project status: draft proposal, final proposal, implementing	Progress Update
11	Deliver the Worcester Park Flood Alleviation Scheme.	2025	Flood Risk Officer	Estimated cost is ~£1m. Fully funded from existing council budget and from the Environment Agency and Thames Water funding.	Implementing	Additional resources have been brought in to move this delayed programme forwards. The scheme has been fully reviewed and amended. Following pre-application discussions regarding the project review it has been confirmed that planning permission is no longer required. A suitable contractor will be procured with construction estimated to start in the Autumn 2025.
12	AMENDED: Establish new, feasible sites for progressing the Beddington catchment flood alleviation scheme.	Ongoing	Flood Risk Officer	Initial feasibility study funded by the existing council budget. Further funding for additional feasibility work is required and additional funding will be required from the Environment Agency to progress the schemes after this stage, if they meet the criteria.	Implementing	The initial feasibility study was submitted in 2024 and found that with the lack of open spaces and narrow highway corridors there is not the space to do anything which would have a large enough impact to remove properties from being at flood risk. The Council is exploring whether a scheme is still viable with a change of scope or by partnering with other projects for retrofitting of Sustainable Drainage Systems (SuDS).
13	Support the delivery of the River Wandle and Beverly Brook Catchment Plans to achieve Water Framework Directive targets.	Ongoing	South East Rivers Trust Senior Biodiversity Officer - provides reporting/ progress updates.	There are a variety of projects with associated costs. This strategy doesn't provide any additional funding.	Implementing	The Council continues to feed into the Catchment Plans and support the Catchment Partnerships. The Goat Bridge project is completed (barring some snagging issues to be resolved). The project at Richmond Green is currently on hiatus due to a legal challenge from a resident.
14	Updated: Work with partners, such as GLA and Public Health, on emergency planning and preparedness, to deliver projects or schemes in response to extreme weather events (e.g. heatwaves and flooding).	Ongoing	Environment Projects Officer <i>Emergency Planning Team</i>	Met from existing budgets.	Implementing	Sutton cool spaces are published on the GLA Cool Spaces map. Opportunities for further action and collaboration continue to be sought.

Action	Timescale	Lead (others involved in italics)	Cost and funding	Project status: draft proposal, final proposal, implementing	Progress Update
15 UPDATED: Raise awareness of Met Office severe weather alerts, supporting residents, schools and businesses to sign up to alerts to be directly informed when severe weather events are anticipated and take action to plan accordingly; monitor data for extreme weather events and impacts in the borough.	Ongoing	Emergency Planning Manager	Met from existing budgets.	Implementing	The Council's Emergency Planning team coordinates the organisation's response and preparation for all severe weather events. This includes sharing weather alert information and encouraging teams to promote this to their contractors, service users etc. This is with an aim of encouraging everyone who lives, works or studies in the borough to take action and stay safe. During the period October 2023 - January 2025, the Emergency Planning team responded to six climate and weather related incident alerts. Of this, three related to flooding, two related to damage caused by storms and one related to severe weather (freezing temperatures). This does not include incidents of extreme heat as none of these have required an emergency response.
16 NEW: Investigate feasibility of a climate risk register which could be used to inform and support development of a climate adaptation strategy.	2024/2025	Head of Sustainability <i>Environment Projects Officer</i>	Additional staff time will be required to undertake feasibility and it is expected that any output will require additional funding.	Draft Proposal	Work has started on a business case and staff are working with partners through work streams such as the London Councils Green & Resilient programme to streamline progress towards climate risk analysis and an adaptation strategy. Further resource is needed to progress this at the required pace.
STREETS AND PUBLIC SPACES:					
17 Include sustainable drainage systems (SuDS) in every road improvement scheme and assess the feasibility of switching to 100% permeable surfacing materials.	As part of planned programme works.	Design and Delivery Manager (Highways)	Funding will be met via individual scheme delivery budgets. There may be additional costs to include SuDS and for ongoing maintenance. These costs need to be included in scheme financial considerations at the start.	Draft Proposal	Consideration of the inclusion of SuDS and permeable materials will be undertaken as each scheme is developed on a cost benefit basis.

Action		Timescale	Lead (others involved in italics)	Cost and funding	Project status: draft proposal, final proposal, implementing	Progress Update
18	NEW: Ensure climate mitigation and climate adaptation are embedded into all council-led regeneration programmes e.g Sutton Town Centre.	As part of planned programme works.	Transport and Regeneration Programme Manager	Met within the budgets allocated to the Regeneration Programme.	Draft Proposal	There are multiple projects and work streams feeding into the Sutton Town Centre regeneration programme. Through the new climate portfolio work, climate impact assessments and the Climate Action Community of Practice, as well as policies within the emergency Local Plan and the aims of the Environment Strategy, this work will continue to be shaped and challenged to deliver on the council's ambitious zero-carbon goals, whilst also considering climate adaptation.

PLANNING:

19	Implement Local Plan Policies 26c (Biodiversity) and 33b (Climate Change Adaptation)21 in line with the Council's Technical Guidance Note on 'Building a Sustainable Sutton' (June 2018). Compliance of major developments with the relevant green space factor (GSF) and biodiversity accounting targets is reported annually in Sutton's Authority Monitoring Report (AMR).	Ongoing - monitored annually.	Senior Planner (Strategic Planning)	Met from existing budgets.	Implementing	All major new build developments granted planning permission and/or completed within the borough have complied with the Council's minimum green space factor (GSF) target in Local Plan Policy 33.
----	-------------------------------------------------------------------------------------------------------------------------------------------------------------------------------------------------------------------------------------------------------------------------------------------------------------------------------------------------------------------------------	-------------------------------	-------------------------------------	----------------------------	--------------	----------------------------------------------------------------------------------------------------------------------------------------------------------------------------------------------------

CROSS CUTTING

	Action	Timescale	Lead (others involved in italics)	Cost and funding	Project status: draft proposal, final proposal, implementing	Progress Update
DECISION MAKING AND PROCUREMENT:						
1	NEW: Monitor the completion of Climate Impact Assessments (CIAs) and expand use to all relevant projects across the council.	Ongoing	Head of Climate Action & Emergency Planning	Met from existing staffing resources.	Implementing	The Climate Action and Emergency Planning team are supporting colleagues to complete CIAs for projects and committees to facilitate mainstreaming of climate action across the organisation. The process has been updated in response to feedback.
2	NEW: Establish a Climate Portfolio to aid monitoring and decision making and ensure the mainstreaming of climate action across the organisation.	Ongoing	Head of Climate Action & Emergency Planning	Met from existing staffing resources.	Implementing	A climate portfolio has been created and the governance for the portfolio and the Environment Strategy updated to ensure direct reporting to each Directorate Management Team in the council.
3	Reduce as much as possible paper copies supplied for committee meetings through: <ul style="list-style-type: none">► concise reports;► encouraging members to go paperless; and► only providing paper copies for complex reports.	Ongoing	Committee Services Manager	No cost.	Implementing	Paper-free support to councillors pursued as part of May 2022 intake of councillors. 25 of 55 councillors currently receive printed copies of reports for at least one committee of which they are a member. All 55 councillors have been issued with Chromebooks in order to reduce paper use. Support, including training, is made available to officers from across the council emphasising the importance of concise reports.
PENSIONS AND FINANCIAL INVESTMENTS:						
4	Explore the use of innovative green financial instruments, low or no-interest borrowing and community sources of funding to deliver environmental improvements.	Ongoing	Head of Climate Action and Emergency Planning	Any new financial approach will require a business case.	Draft proposal	In partnership with UCL's Bartlett Faculty of the Built Environment, an initial feasibility study was conducted to assess the potential for deploying the Net Zero Neighbourhood (NZN) financing model. This is an innovative model designed to attract private investment by grouping together net zero projects within a locality, e.g. retrofit and low carbon energy schemes. The Climate Action & Emergency Planning team is developing a strategic outline business case to potentially take this work forward.

Action		Timescale	Lead (others involved in italics)	Cost and funding	Project status: draft proposal, final proposal, implementing	Progress Update
COUNCIL STAFF:						
5	<p>Promote ways staff can reduce their environmental impact at home and in the workplace, including:</p> <ul style="list-style-type: none"> ▶ Waste and recycling; ▶ Heating and energy use; ▶ Travelling to and during work; ▶ Water use; and ▶ Nature-based solutions. 	Ongoing	<p>Environment Projects Officer</p> <p>Communications and Engagement Officer</p>	Carbon Trust recommends spending the equivalent of 1% of energy bills on awareness campaigns, with an estimated energy saving of half the cost of the campaign. This would be approx. £30k. This cannot be achieved with existing budgets.	Implementing	Ongoing comms campaigns happen throughout the year within the council's internal staff newsletter. Since December 2023, a Green Tip of the week has provided handy tips, ideas and resources to help staff take climate action at home and in work.
6	Deliver a Climate Action Community of Practice, equipping staff with skills, knowledge and tools to respond to the Climate Emergency.	Ongoing	Sustainability Manager	Met from existing staffing resources.	Implementing	The group continues and was reviewed at the start of 2024 to support increased participation. Since then active participation has increased with representation from a wide range of services. Members meet every other month to discuss best practice, challenges and opportunities within the council.
7	NEW: Deliver a mandatory programme of climate awareness training for council staff.	Ongoing	<p>Sustainability Manager</p> <p>Environment Projects Office</p>	Met from existing staffing resources.	Implementing	A mandatory Climate Awareness training programme, informed by the climate literacy programme, was delivered to managers in 2024. A new e-module for all staff has been developed and piloted in 2024, ready for roll-out in 2025.
SUPPORTING ACTION BY OTHERS:						
8	Offer an audit and advice service for schools, helping them access grants and information on environmental improvements.	As funding permits.	Head of Climate Action and Emergency Planning	The Ashden / Friends of the Earth toolkit proposes a part-time member of staff and to target a total reduction in CO2 of 1,875 tonnes. This requires an extra member of staff to progress this. Schools can access interest free loans through Salix finance.	N/A - no resources to progress.	Grant funding opportunities are shared with schools through the council's Education Bulletin newsletter. Activities, schemes and opportunities of support for climate action, such as the free Climate Ambassador and Climate Action Advisor programmes, are also promoted through the newsletter and Heads of Schools board meetings. Schools from Sutton joined both of the above programmes in 2024.

Action		Timescale	Lead (others involved in italics)	Cost and funding	Project status: draft proposal, final proposal, implementing	Progress Update
9	Continue to promote funding opportunities to relevant groups for environment improvements e.g. businesses, charities, groups that work with vulnerable residents, schools etc.	Ongoing - promoting as relevant opportunities arise	Sustainability Manager Climate Partnership Manager	Time on promotion can be met from existing resources. Funding is made available from a range of sources, for public sector, private sector, individuals and communities.	Implementing	Funding opportunities are shared regularly with partners, including through the Sutton Environmental Champions Group.
10	NEW: Use council funding pots to support and encourage Climate Action in the community	Ongoing - annual project submission windows	Head of Policy, Insights & Communities Business Development Manager	Sutton Neighbourhood Fund and Sutton Community Fund are funded by the council from Neighbourhood Community Infrastructure Levy (NCIL) & existing revenue budgets.	Implementing	Another round of funding has been granted to community organisations for both the Sutton Neighbourhood Fund (administered by Sutton Council) and the Sutton Community Fund (administered by Community Action Sutton). Successful projects in 2024 includes Sutton FairTrade's Fairtrade Fortnight events, a community garden at Sutton United, rain water harvesting at Green Wrythe Lane allotments, a breast pump hire scheme and a range of tree, hedge and bulb planting across the borough.

